

---

**Product Name: Hsf1 Rabbit Monoclonal Antibody****Catalog #: AMRe85677**

For research use only.

**Summary**

<b>Description</b>	Recombinant rabbit monoclonal antibody
<b>Host</b>	Rabbit
<b>Application</b>	WB,IHC,IP
<b>Reactivity</b>	Human
<b>Conjugation</b>	Unconjugated
<b>Modification</b>	Unmodified
<b>Isotype</b>	IgG
<b>Clonality</b>	Monoclonal
<b>Form</b>	Liquid
<b>Concentration</b>	
<b>Storage</b>	Aliquot and store at -20°C (valid for 12 months). Avoid freeze/thaw cycles.
<b>Shipping</b>	Ice bags
<b>Buffer</b>	Purified antibody in TBS with 0.05% sodium azide,0.05%protective protein and 50% glycerol.
<b>Purification</b>	Affinity Purification

**Application**

<b>Dilution Ratio</b>	WB 1:500-1:1000,IHC 1:50-1:100,IP 1:10-1:20
<b>Molecular Weight</b>	Calculated MW: 57 kDa; Observed MW: 80 kDa

**Antigen Information**

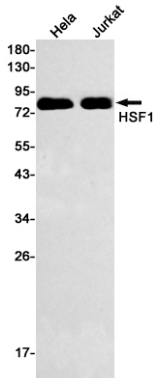
<b>Gene Name</b>	Hsf1
<b>Alternative Names</b>	HSF1; HSTF1; Heat shock factor protein 1; HSF 1; Heat shock transcription factor 1; HSTF 1
<b>Gene ID</b>	3297.0
<b>SwissProt ID</b>	Q00613
<b>Immunogen</b>	A synthetic peptide of human HSF1

**Background**

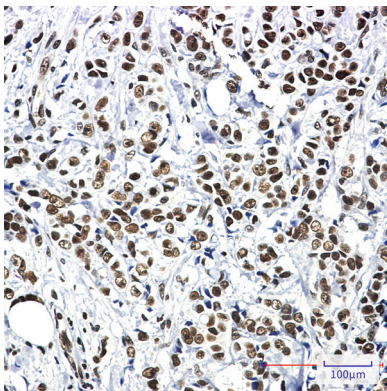
DNA-binding protein that specifically binds heat shock promoter elements (HSE) and activates transcription. In higher eukaryotes, HSF is unable to bind to the HSE unless the cells are heat shocked.

## Research Area

## Image Data



Western blot analysis of HSF1 in HeLa, Jurkat lysates using Hsf1 antibody.



Immunohistochemistry analysis of paraffin-embedded Human breast cancer using HSF1 antibody. High-pressure and temperature Sodium Citrate pH 6.0 was used for antigen retrieval.