

**Product Name: HMGCL Rabbit Monoclonal Antibody**  
**Catalog #: AMRe85661**



## Summary

<b>Production Name</b>	HMGCL Rabbit Monoclonal Antibody
<b>Description</b>	Rabbit Monoclonal antibody
<b>Host</b>	Rabbit
<b>Application</b>	WB
<b>Reactivity</b>	Human

## Performance

<b>Conjugation</b>	Unconjugated
<b>Modification</b>	Unmodified
<b>Isotype</b>	IgG
<b>Clonality</b>	Monoclonal
<b>Form</b>	Liquid
<b>Storage</b>	Store at 4°C short term. Aliquot and store at -20°C long term. Avoid freeze/thaw cycles.
<b>Buffer</b>	Purified antibody in TBS with 0.05% sodium azide, 0.05% BSA and 50% glycerol.
<b>Purification</b>	Affinity Purification

## Immunogen

<b>Gene Name</b>	HMGCL
<b>Alternative Names</b>	3-hydroxymethyl-3-methylglutaryl-CoA lyase; HL
<b>Gene ID</b>	3155.0
<b>SwissProt ID</b>	P35914. A synthetic peptide of human HMGCL

## Application

<b>Dilution Ratio</b>	WB:1:500-1:1000
<b>Molecular Weight</b>	Calculated MW: 34 kDa; Observed MW: 34 kDa

## Background

Key enzyme in ketogenesis (ketone body formation). Terminal step in leucine catabolism. Ketone bodies (beta-hydroxybutyrate, acetoacetate and acetone) are essential as an alternative source of energy to glucose, as lipid precursors

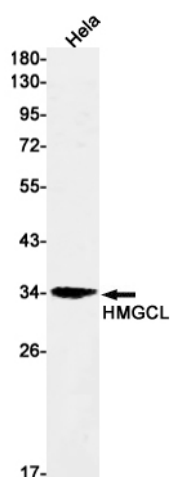
**Product Name: HMGCL Rabbit Monoclonal Antibody**  
**Catalog #: AMRe85661**



and as regulators of metabolism.

## Research Area

## Image Data



Western blot analysis of HMGCL in HeLa lysates using HMGCL antibody.

## Note

For research use only.