

---

**Product Name: HLTF Rabbit Monoclonal Antibody****Catalog #: AMRe85659**

For research use only.

**Summary**

<b>Description</b>	Recombinant rabbit monoclonal antibody
<b>Host</b>	Rabbit
<b>Application</b>	WB,ICC
<b>Reactivity</b>	Human
<b>Conjugation</b>	Unconjugated
<b>Modification</b>	Unmodified
<b>Isotype</b>	IgG
<b>Clonality</b>	Monoclonal
<b>Form</b>	Liquid
<b>Concentration</b>	
<b>Storage</b>	Aliquot and store at -20°C (valid for 12 months). Avoid freeze/thaw cycles.
<b>Shipping</b>	Ice bags
<b>Buffer</b>	Purified antibody in TBS with 0.05% sodium azide,0.05%protective protein and 50% glycerol.
<b>Purification</b>	Affinity Purification

**Application**

<b>Dilution Ratio</b>	WB 1:500-1:1000,ICC 1:50-1:200
<b>Molecular Weight</b>	Calculated MW: 114 kDa; Observed MW: 114 kDa

**Antigen Information**

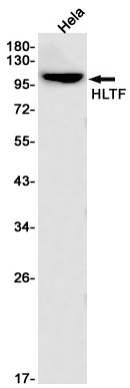
<b>Gene Name</b>	HLTF
<b>Alternative Names</b>	HIP116; HIP116A; HLTF 1; Hltf; HLTF1; p113; RNF80; SMARC A3; SMARCA 3; SMARCA3; SNF2L3; ZBU1
<b>Gene ID</b>	6596.0
<b>SwissProt ID</b>	Q14527
<b>Immunogen</b>	A synthetic peptide of human HLTF

**Background**

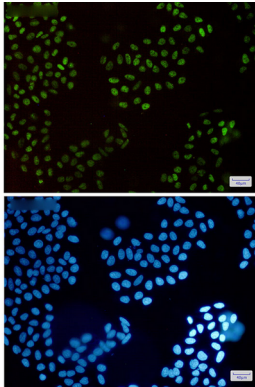
Has both helicase and E3 ubiquitin ligase activities. Possesses intrinsic ATP-dependent nucleosome-remodeling activity; This activity may be required for transcriptional activation or repression of specific target promoters (By similarity).

## Research Area

## Image Data



Western blot analysis of HLTF in HeLa lysates using HLTF antibody.



Immunocytochemistry analysis of HLTF (green) in HeLa using HLTF antibody, and DAPI (blue)