

**Product Name: HCE Rabbit Monoclonal Antibody****Catalog #: AMRe85639**

For research use only.

**Summary**

<b>Description</b>	Recombinant rabbit monoclonal antibody
<b>Host</b>	Rabbit
<b>Application</b>	WB,IP
<b>Reactivity</b>	Human,Mouse,Rat
<b>Conjugation</b>	Unconjugated
<b>Modification</b>	Unmodified
<b>Isotype</b>	IgG
<b>Clonality</b>	Monoclonal
<b>Form</b>	Liquid
<b>Concentration</b>	
<b>Storage</b>	Aliquot and store at -20°C (valid for 12 months). Avoid freeze/thaw cycles.
<b>Shipping</b>	Ice bags
<b>Buffer</b>	Purified antibody in TBS with 0.05% sodium azide,0.05%protective protein and 50% glycerol.
<b>Purification</b>	Affinity Purification

**Application**

<b>Dilution Ratio</b>	WB 1:500-1:1000,IP 1:10-1:20
<b>Molecular Weight</b>	Calculated MW: 69 kDa; Observed MW: 69 kDa

**Antigen Information**

<b>Gene Name</b>	HCE
<b>Alternative Names</b>	HCE; HCE1; hCAP; CAP1A
<b>Gene ID</b>	8732.0
<b>SwissProt ID</b>	O60942
<b>Immunogen</b>	Recombinant protein of human HCE

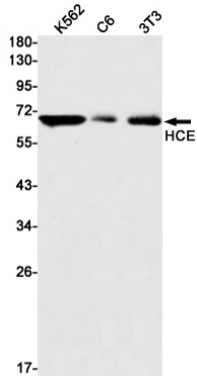
**Background**

Bifunctional mRNA-capping enzyme exhibiting RNA 5'-triphosphatase activity in the N-terminal part and mRNA guanylyltransferase activity in the C-terminal part. Catalyzes the first two steps of cap formation: by removing the gamma-phosphate from the 5'-triphosphate end of nascent mRNA to yield a diphosphate end, and by transferring the gmp moiety of

GTP to the 5'-diphosphate terminus.

## Research Area

## Image Data



Western blot analysis of HCE in K562, C6, 3T3 lysates using HCE antibody.