

**Product Name: HADHA Rabbit Monoclonal Antibody****Catalog #: AMRe85636**

For research use only.

**Summary**

<b>Description</b>	Recombinant rabbit monoclonal antibody
<b>Host</b>	Rabbit
<b>Application</b>	WB,IHC,ICC,IP
<b>Reactivity</b>	Human,Mouse,Rat
<b>Conjugation</b>	Unconjugated
<b>Modification</b>	Unmodified
<b>Isotype</b>	IgG
<b>Clonality</b>	Monoclonal
<b>Form</b>	Liquid
<b>Concentration</b>	0.62mg/ml. The concentration of this product may be batch-dependent.
<b>Storage</b>	Aliquot and store at -20°C (valid for 12 months). Avoid freeze/thaw cycles.
<b>Shipping</b>	Ice bags
<b>Buffer</b>	Purified antibody in TBS with 0.05% sodium azide,0.05%protective protein and 50% glycerol.
<b>Purification</b>	Affinity Purification

**Application**

<b>Dilution Ratio</b>	WB 1:500-1:1000,IHC 1:50-1:100,ICC 1:50-1:200,IP 1:10-1:20
<b>Molecular Weight</b>	Calculated MW: 83 kDa; Observed MW: 78 kDa

**Antigen Information**

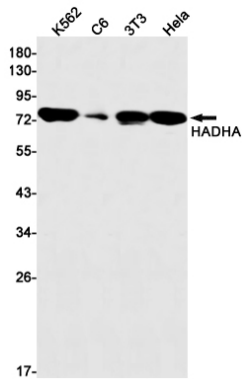
<b>Gene Name</b>	HADHA
<b>Alternative Names</b>	GBP; ECHA; HADH; LCEH; MTPA; LCHAD; TP-ALPHA
<b>Gene ID</b>	3030.0
<b>SwissProt ID</b>	P40939
<b>Immunogen</b>	A synthetic peptide of human HADHA

**Background**

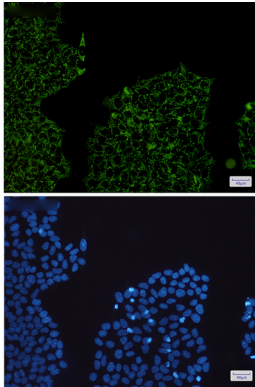
Mitochondrial trifunctional enzyme catalyzes the last three of the four reactions of the mitochondrial beta-oxidation pathway.

**Research Area**

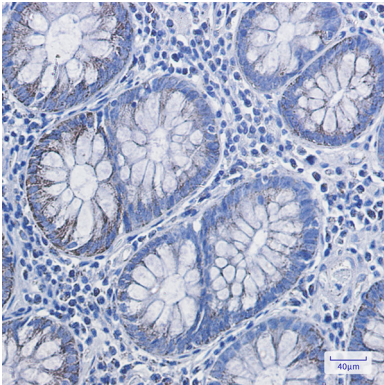
## Image Data



Western blot analysis of HADHA in K562, C6, 3T3, HeLa lysates using HADHA antibody.



Immunocytochemistry analysis of HADHA(green) in HeLa using HADHA antibody, and DAPI(blue)



Immunohistochemistry analysis of paraffin-embedded Human colon cancer using HADHA antibody. High-pressure and temperature Sodium Citrate pH 6.0 was used for antigen retrieval.