
Product Name: GSK3 alpha Rabbit Monoclonal Antibody**Catalog #: AMRe85634**

For research use only.

Summary

Description	Recombinant rabbit monoclonal antibody
Host	Rabbit
Application	WB,ICC,IP
Reactivity	Human,Mouse,Rat
Conjugation	Unconjugated
Modification	Unmodified
Isotype	IgG
Clonality	Monoclonal
Form	Liquid
Concentration	0.62mg/ml. The concentration of this product may be batch-dependent.
Storage	Aliquot and store at -20°C (valid for 12 months). Avoid freeze/thaw cycles.
Shipping	Ice bags
Buffer	Purified antibody in TBS with 0.05% sodium azide,0.05%protective protein and 50% glycerol.
Purification	Affinity Purification

Application

Dilution Ratio	WB 1:500-1:1000,ICC 1:50-1:200,IP 1:10-1:20
Molecular Weight	Calculated MW: 51 kDa; Observed MW: 51 kDa

Antigen Information

Gene Name	GSK3 alpha
Alternative Names	Serine/threonine-protein kinase GSK3A
Gene ID	2931.0
SwissProt ID	P49840
Immunogen	A synthetic peptide of human GSK3 alpha

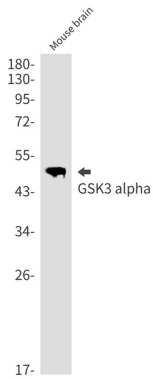
Background

GSK3A a proline-directed protein kinase of the GSK family. Implicated in the control of several regulatory proteins including glycogen synthase, Myb, and c-Jun. GSK3 and GSK3 have similar functions. GSK3 phosphorylates tau, the principal component of neurofibrillary tangles in Alzheimer disease and is required for maximal production of amyloid plaque peptides by secretase.

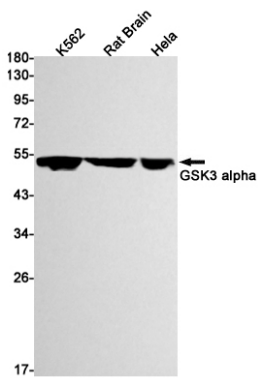
Research Area

Wnt signaling pathway

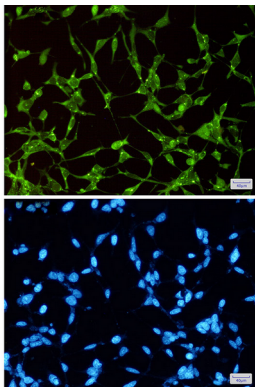
Image Data



Western blot analysis of GSK3 alpha in mouse brain lysates using GSK3 alpha antibody.



Western blot analysis of GSK3 alpha in K562, rat Brain, Hela lysates using GSK3 alpha antibody



Immunocytochemistry analysis of GSK3 alpha (green) in 293t using GSK3 alpha antibody, and DAPI(blue).