

Product Name: RDC1 Rabbit Monoclonal Antibody**Catalog #: AMRe85629**

For research use only.

Summary

Description	Recombinant rabbit monoclonal antibody
Host	Rabbit
Application	WB
Reactivity	Human,Mouse,Rat
Conjugation	Unconjugated
Modification	Unmodified
Isotype	IgG
Clonality	Monoclonal
Form	Liquid
Concentration	
Storage	Aliquot and store at -20°C (valid for 12 months). Avoid freeze/thaw cycles.
Shipping	Ice bags
Buffer	Purified antibody in TBS with 0.05% sodium azide,0.05%protective protein and 50% glycerol.
Purification	Affinity Purification

Application

Dilution Ratio	WB 1:500-1:1000
Molecular Weight	Calculated MW: 41 kDa; Observed MW: 41 kDa

Antigen Information

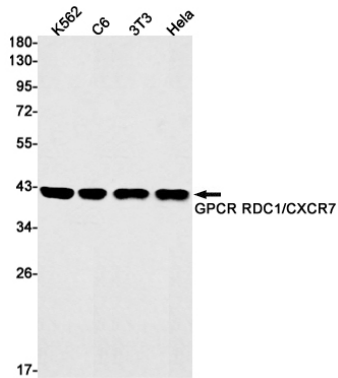
Gene Name	RDC1
Alternative Names	RDC1; CXCR7; RDC-1; CMKOR1; CXC-R7; CXCR-7; GPR159
Gene ID	57007.0
SwissProt ID	P25106
Immunogen	A synthetic peptide of human GPCR RDC1

Background

Plays a regulatory role in CXCR4-mediated activation of cell surface integrins by CXCL12. Required for heart valve development. Acts as coreceptor with CXCR4 for a restricted number of HIV isolates.

Research Area

Image Data



Western blot analysis of GPCR RDC1/CXCR7 in K562, C6, 3T3, HeLa lysates using RDC1 antibody.