

---

**Product Name: GPR37 Rabbit Monoclonal Antibody****Catalog #: AMRe85627**

For research use only.

**Summary**

<b>Description</b>	Recombinant rabbit monoclonal antibody
<b>Host</b>	Rabbit
<b>Application</b>	WB
<b>Reactivity</b>	Rat
<b>Conjugation</b>	Unconjugated
<b>Modification</b>	Unmodified
<b>Isotype</b>	IgG
<b>Clonality</b>	Monoclonal
<b>Form</b>	Liquid
<b>Concentration</b>	
<b>Storage</b>	Aliquot and store at -20°C (valid for 12 months). Avoid freeze/thaw cycles.
<b>Shipping</b>	Ice bags
<b>Buffer</b>	Purified antibody in TBS with 0.05% sodium azide, 0.05% protective protein and 50% glycerol.
<b>Purification</b>	Affinity Purification

**Application**

<b>Dilution Ratio</b>	WB 1:500-1:1000
<b>Molecular Weight</b>	Calculated MW: 67 kDa; Observed MW: 67 kDa

**Antigen Information**

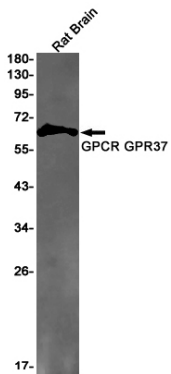
<b>Gene Name</b>	GPR37
<b>Alternative Names</b>	GPR37; Probable G-protein coupled receptor 37; Endothelin B receptor-like protein 1; ETBR-LP-1; Parkin-associated endothelin receptor-like receptor; PAELR
<b>Gene ID</b>	2861.0
<b>SwissProt ID</b>	O15354
<b>Immunogen</b>	A synthetic peptide of human GPCR GPR37

**Background**

Receptor for the neuroprotective and glioprotective factor prosaposin. Ligand binding induces endocytosis, followed by an ERK phosphorylation cascade.

## Research Area

## Image Data



Western blot analysis of GPCR GPR37 in rat Brain lysates using GPR37 antibody.