

Product Name: GNE Rabbit Monoclonal Antibody**Catalog #: AMRe85612**

For research use only.

Summary

Description	Recombinant rabbit monoclonal antibody
Host	Rabbit
Application	WB,IP
Reactivity	Human
Conjugation	Unconjugated
Modification	Unmodified
Isotype	IgG
Clonality	Monoclonal
Form	Liquid
Concentration	
Storage	Aliquot and store at -20°C (valid for 12 months). Avoid freeze/thaw cycles.
Shipping	Ice bags
Buffer	Purified antibody in TBS with 0.05% sodium azide, 0.05% protective protein and 50% glycerol.
Purification	Affinity Purification

Application

Dilution Ratio	WB 1:500-1:1000, IP 1:10-1:20
Molecular Weight	Calculated MW: 79 kDa; Observed MW: 75 kDa

Antigen Information

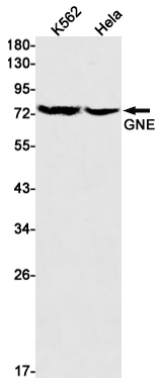
Gene Name	GNE
Alternative Names	NM; DMRV; IBM2; Uae1; GLCNE
Gene ID	10020.0
SwissProt ID	Q9Y223
Immunogen	A synthetic peptide of human GLCNE

Background

Regulates and initiates biosynthesis of N-acetylneuraminic acid (NeuAc), a precursor of sialic acids. Plays an essential role in early development. Required for normal sialylation in hematopoietic cells. Sialylation is implicated in cell adhesion, signal transduction, tumorigenicity and metastatic behavior of malignant cells.

Research Area

Image Data



Western blot analysis of GNE in K562, HeLa lysates using GNE antibody.