

**Product Name: GFPT2 Rabbit Monoclonal Antibody****Catalog #: AMRe85610**

For research use only.

**Summary**

<b>Description</b>	Recombinant rabbit monoclonal antibody
<b>Host</b>	Rabbit
<b>Application</b>	WB,ICC,IP
<b>Reactivity</b>	Human,Mouse,Rat
<b>Conjugation</b>	Unconjugated
<b>Modification</b>	Unmodified
<b>Isotype</b>	IgG
<b>Clonality</b>	Monoclonal
<b>Form</b>	Liquid
<b>Concentration</b>	0.62mg/ml. The concentration of this product may be batch-dependent.
<b>Storage</b>	Aliquot and store at -20°C (valid for 12 months). Avoid freeze/thaw cycles.
<b>Shipping</b>	Ice bags
<b>Buffer</b>	Purified antibody in TBS with 0.05% sodium azide,0.05%protective protein and 50% glycerol.
<b>Purification</b>	Affinity Purification

**Application**

<b>Dilution Ratio</b>	WB 1:500-1:1000,ICC 1:50-1:200,IP 1:10-1:20
<b>Molecular Weight</b>	Calculated MW: 77 kDa; Observed MW: 77 kDa

**Antigen Information**

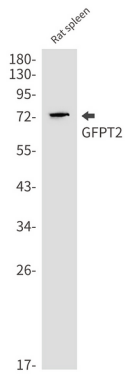
<b>Gene Name</b>	GFPT2
<b>Alternative Names</b>	GFAT; GFAT2; GFAT 2
<b>Gene ID</b>	9945.0
<b>SwissProt ID</b>	O94808
<b>Immunogen</b>	Recombinant protein of human GFPT2

**Background**

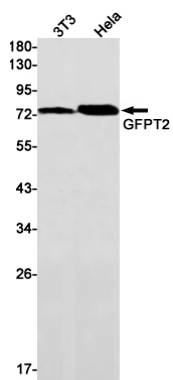
Controls the flux of glucose into the hexosamine pathway. Most likely involved in regulating the availability of precursors for N- and O-linked glycosylation of proteins.

## Research Area

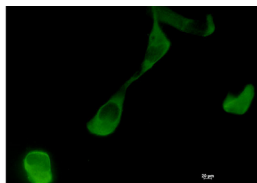
## Image Data



Western blot analysis of GFPT2 in rat spleen lysates using GFPT2 antibody.



Western blot analysis of GFPT2 in 3T3, Hela lysates using GFPT2 antibody



Immunocytochemistry analysis of GFPT2 (green) in HT-1080 using GFPT2 antibody, and DAPI (blue).

