
Product Name: SMN Rabbit Monoclonal Antibody**Catalog #: AMRe85606**

For research use only.

Summary

Description	Recombinant rabbit monoclonal antibody
Host	Rabbit
Application	WB,ICC
Reactivity	Human
Conjugation	Unconjugated
Modification	Unmodified
Isotype	IgG
Clonality	Monoclonal
Form	Liquid
Concentration	
Storage	Aliquot and store at -20°C (valid for 12 months). Avoid freeze/thaw cycles.
Shipping	Ice bags
Buffer	Purified antibody in TBS with 0.05% sodium azide,0.05%protective protein and 50% glycerol.
Purification	Affinity Purification

Application

Dilution Ratio	WB 1:500-1:1000,ICC 1:50-1:200
Molecular Weight	Calculated MW: 32 kDa; Observed MW: 35 kDa

Antigen Information

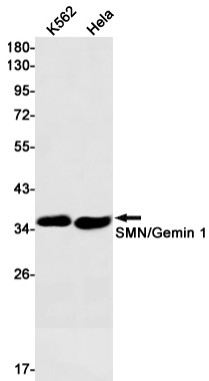
Gene Name	SMN
Alternative Names	SMN1; SMN; SMNT; SMN2; SMNC; Survival motor neuron protein; Component of gems 1; Gemin-1
Gene ID	6606.0
SwissProt ID	Q16637
Immunogen	A synthetic peptide of human Gemin 1

Background

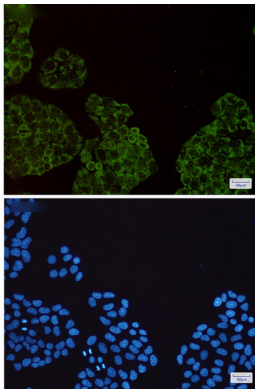
The SMN complex plays an essential role in spliceosomal snRNP assembly in the cytoplasm and is required for pre-mRNA splicing in the nucleus. It may also play a role in the metabolism of snoRNPs.

Research Area

Image Data



Western blot analysis of SMN/Gemin 1 in K562, HeLa lysates using SMN antibody.



Immunocytochemistry analysis of Gemin 1 (green) in HeLa using Gemin 1 antibody, and DAPI (blue)