
Product Name: Galactosidase alpha Rabbit Monoclonal Antibody**Catalog #: AMRe85595**

For research use only.

Summary

Description	Recombinant rabbit monoclonal antibody
Host	Rabbit
Application	WB,IHC,IP
Reactivity	Human
Conjugation	Unconjugated
Modification	Unmodified
Isotype	IgG
Clonality	Monoclonal
Form	Liquid
Concentration	
Storage	Aliquot and store at -20°C (valid for 12 months). Avoid freeze/thaw cycles.
Shipping	Ice bags
Buffer	Purified antibody in TBS with 0.05% sodium azide,0.05%protective protein and 50% glycerol.
Purification	Affinity Purification

Application

Dilution Ratio	WB 1:500-1:1000,IHC 1:50-1:100,IP 1:10-1:20
Molecular Weight	Calculated MW: 49 kDa; Observed MW: 49 kDa

Antigen Information

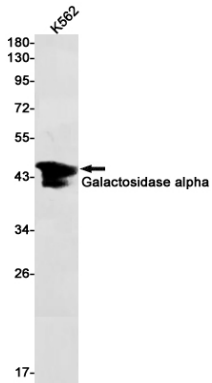
Gene Name	Galactosidase alpha
Alternative Names	Alpha gal A; GALA; Galactosidase; alpha; GLA; Melibiase
Gene ID	2717.0
SwissProt ID	P06280
Immunogen	A synthetic peptide of human Galactosidase alpha

Background

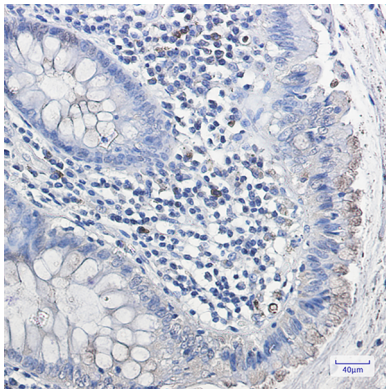
Defects in GLA are the cause of Fabry disease (FD) [MIM:301500]. FD is a rare X-linked sphingolipidosis disease where glycolipid accumulates in many tissues. The disease consists of an inborn error of glycosphingolipid catabolism.

Research Area

Image Data



Western blot analysis of Galactosidase alpha in K562 lysates using Galactosidase alpha antibody.



Immunohistochemistry analysis of paraffin-embedded Human colon cancer using Galactosidase alpha antibody. High-pressure and temperature Sodium Citrate pH 6.0 was used for antigen retrieval.