

**Product Name: Folate Binding Protein Rabbit Monoclonal Antibody****Catalog #: AMRe85575**

For research use only.

**Summary**

<b>Description</b>	Recombinant rabbit monoclonal antibody
<b>Host</b>	Rabbit
<b>Application</b>	WB,IHC
<b>Reactivity</b>	Human
<b>Conjugation</b>	Unconjugated
<b>Modification</b>	Unmodified
<b>Isotype</b>	IgG
<b>Clonality</b>	Monoclonal
<b>Form</b>	Liquid
<b>Concentration</b>	
<b>Storage</b>	Aliquot and store at -20°C (valid for 12 months). Avoid freeze/thaw cycles.
<b>Shipping</b>	Ice bags
<b>Buffer</b>	Purified antibody in TBS with 0.05% sodium azide,0.05%protective protein and 50% glycerol.
<b>Purification</b>	Affinity Purification

**Application**

<b>Dilution Ratio</b>	WB 1:500-1:1000,IHC 1:50-1:100
<b>Molecular Weight</b>	Calculated MW: 30 kDa; Observed MW: 40 kDa

**Antigen Information**

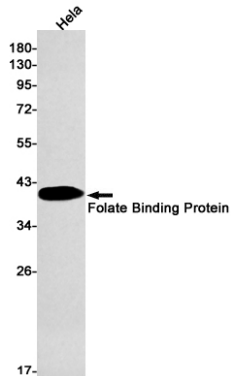
<b>Gene Name</b>	Folate Binding Protein
<b>Alternative Names</b>	FOLR1; FOLR; Folate receptor alpha; FR-alpha; Adult folate-binding protein; FBP; Folate receptor 1; Folate receptor; adult; KB cells FBP; Ovarian tumor-associated antigen MOv18
<b>Gene ID</b>	2348.0
<b>SwissProt ID</b>	P15328
<b>Immunogen</b>	A synthetic peptide of human Folate Binding Protein

**Background**

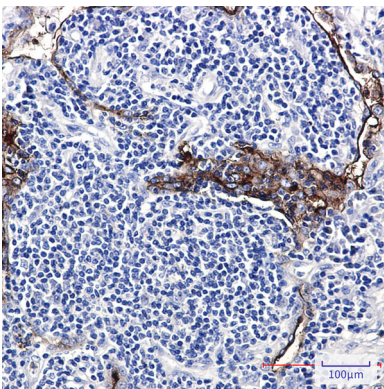
Binds to folate and reduced folic acid derivatives and mediates delivery of 5-methyltetrahydrofolate to the interior of cells.

## Research Area

## Image Data



Western blot analysis of Folate Binding Protein in HeLa lysates using Folate Binding Protein antibody.



Immunohistochemistry analysis of paraffin-embedded Human lung cancer using Folate Binding Protein antibody. High-pressure and temperature Sodium Citrate pH 6.0 was used for antigen retrieval.