

---

**Product Name: Factor D Rabbit Monoclonal Antibody****Catalog #: AMRe85553**

For research use only.

**Summary**

<b>Description</b>	Recombinant rabbit monoclonal antibody
<b>Host</b>	Rabbit
<b>Application</b>	WB
<b>Reactivity</b>	Human
<b>Conjugation</b>	Unconjugated
<b>Modification</b>	Unmodified
<b>Isotype</b>	IgG
<b>Clonality</b>	Monoclonal
<b>Form</b>	Liquid
<b>Concentration</b>	
<b>Storage</b>	Aliquot and store at -20°C (valid for 12 months). Avoid freeze/thaw cycles.
<b>Shipping</b>	Ice bags
<b>Buffer</b>	Purified antibody in TBS with 0.05% sodium azide, 0.05% protective protein and 50% glycerol.
<b>Purification</b>	Affinity Purification

**Application**

<b>Dilution Ratio</b>	WB 1:500-1:1000
<b>Molecular Weight</b>	Calculated MW: 27 kDa; Observed MW: 27 kDa

**Antigen Information**

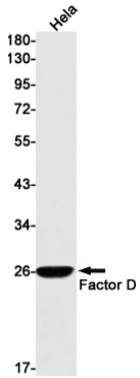
<b>Gene Name</b>	Factor D
<b>Alternative Names</b>	DF; ADN; PFD; ADIPSIN
<b>Gene ID</b>	1675.0
<b>SwissProt ID</b>	P00746
<b>Immunogen</b>	Recombinant protein of human Factor D

**Background**

Factor D cleaves factor B when the latter is complexed with factor C3b, activating the C3bbb complex, which then becomes the C3 convertase of the alternate pathway. Its function is homologous to that of C1s in the classical pathway.

## Research Area

## Image Data



Western blot analysis of Factor D in HeLa lysates using Factor D antibody.