

Product Name: EWSR1 Rabbit Monoclonal Antibody**Catalog #: AMRe85549**

For research use only.

Summary

Description	Recombinant rabbit monoclonal antibody
Host	Rabbit
Application	WB,ICC
Reactivity	Human
Conjugation	Unconjugated
Modification	Unmodified
Isotype	IgG
Clonality	Monoclonal
Form	Liquid
Concentration	
Storage	Aliquot and store at -20°C (valid for 12 months). Avoid freeze/thaw cycles.
Shipping	Ice bags
Buffer	Purified antibody in TBS with 0.05% sodium azide, 0.05% protective protein and 50% glycerol.
Purification	Affinity Purification

Application

Dilution Ratio	WB 1:500-1:1000, ICC 1:50-1:200
Molecular Weight	Calculated MW: 68 kDa; Observed MW: 85 kDa

Antigen Information

Gene Name	EWSR1
Alternative Names	EWSR1; EWS; RNA-binding protein EWS; EWS oncogene; Ewing sarcoma breakpoint region 1 protein
Gene ID	2130.0
SwissProt ID	Q01844
Immunogen	A synthetic peptide of human EWSR1

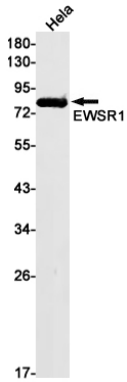
Background

Might normally function as a repressor. EWS-fusion-proteins (EFPS) may play a role in the tumorigenic process. They may disturb gene expression by mimicking, or interfering with the normal function of CTD-POLII within the transcription initiation

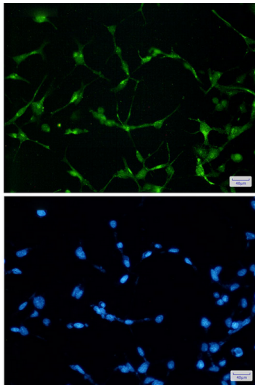
complex.

Research Area

Image Data



Western blot analysis of EWSR1 in HeLa lysates using EWSR1 antibody.



Immunocytochemistry analysis of EWSR1 (green) in 293t using EWSR1 antibody, and DAPI (blue).