
Product Name: EPS15R Rabbit Monoclonal Antibody**Catalog #: AMRe85543**

For research use only.

Summary

Description	Recombinant rabbit monoclonal antibody
Host	Rabbit
Application	WB,IP
Reactivity	Human
Conjugation	Unconjugated
Modification	Unmodified
Isotype	IgG
Clonality	Monoclonal
Form	Liquid
Concentration	
Storage	Aliquot and store at -20°C (valid for 12 months). Avoid freeze/thaw cycles.
Shipping	Ice bags
Buffer	Purified antibody in TBS with 0.05% sodium azide,0.05%protective protein and 50% glycerol.
Purification	Affinity Purification

Application

Dilution Ratio	WB 1:500-1:1000,IP 1:10-1:20
Molecular Weight	Calculated MW: 94 kDa; Observed MW: 130 kDa

Antigen Information

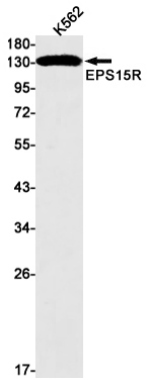
Gene Name	EPS15R
Alternative Names	EPS15R
Gene ID	58513.0
SwissProt ID	Q9UBC2
Immunogen	A synthetic peptide of human EPS15R

Background

Seems to be a constitutive component of clathrin-coated pits that is required for receptor-mediated endocytosis. Involved in endocytosis of integrin beta-1 (ITGB1) and transferrin receptor (TFR); internalization of ITGB1 as DAB2-dependent cargo but not TFR seems to require association with DAB2.

Research Area

Image Data



Western blot analysis of EPS15R in K562 lysates using EPS15R antibody.