

---

**Product Name: EpCAM Rabbit Monoclonal Antibody****Catalog #: AMRe85542**

For research use only.

**Summary**

<b>Description</b>	Recombinant rabbit monoclonal antibody
<b>Host</b>	Rabbit
<b>Application</b>	WB,IHC,ICC,IP
<b>Reactivity</b>	Human,Mouse,Rat
<b>Conjugation</b>	Unconjugated
<b>Modification</b>	Unmodified
<b>Isotype</b>	IgG
<b>Clonality</b>	Monoclonal
<b>Form</b>	Liquid
<b>Concentration</b>	0.53mg/ml. The concentration of this product may be batch-dependent.
<b>Storage</b>	Aliquot and store at -20°C (valid for 12 months). Avoid freeze/thaw cycles.
<b>Shipping</b>	Ice bags
<b>Buffer</b>	Purified antibody in TBS with 0.05% sodium azide,0.05%protective protein and 50% glycerol.
<b>Purification</b>	Affinity Purification

**Application**

<b>Dilution Ratio</b>	WB 1:500-1:1000,IHC 1:50-1:100,ICC 1:50-1:200,IP 1:10-1:20
<b>Molecular Weight</b>	Calculated MW: 35 kDa; Observed MW: 35,39 kDa

**Antigen Information**

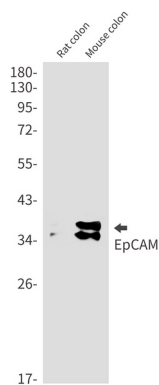
<b>Gene Name</b>	EpCAM EPCAM; GA733-2; M1S2; M4S1; MIC18; TACSTD1; TROP1; Epithelial cell adhesion molecule; Ep-CAM; Adenocarcinoma-associated antigen; Cell surface glycoprotein Trop-1; Epithelial
<b>Alternative Names</b>	cell surface antigen; Epithelial glycoprotein; EGP; Epithelial glycoprotein 314; EGP314; hEGP314; KS 1/4 antigen; KSA; Major gastrointestinal tumor-associated protein GA733-2; Tumor-associated calcium signal transducer 1; CD326
<b>Gene ID</b>	4072.0
<b>SwissProt ID</b>	P16422
<b>Immunogen</b>	Recombinant protein of human EpCAM

## Background

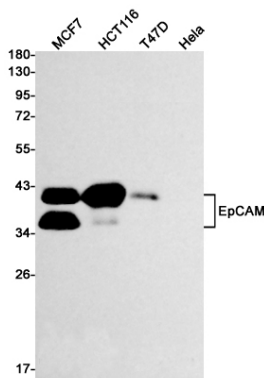
May act as a physical homophilic interaction molecule between intestinal epithelial cells (IECs) and intraepithelial lymphocytes (IELs) at the mucosal epithelium for providing immunological barrier as a first line of defense against mucosal infection. Plays a role in embryonic stem cells proliferation and differentiation. Up-regulates the expression of FABP5, MYC and cyclins A and E.

## Research Area

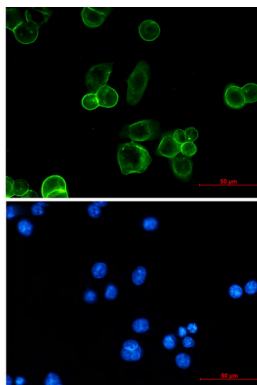
## Image Data



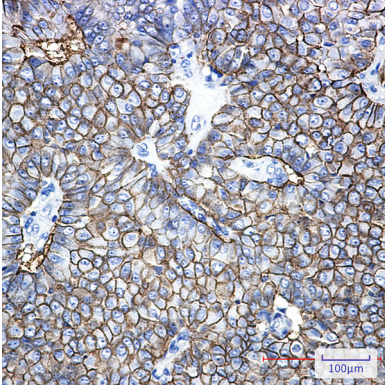
Western blot analysis of EpCAM in rat colon, mouse colon lysates using EpCAM antibody.



Western blot analysis of EpCAM in MCF-7, HCT116, T47D, HeLa lysates using EpCAM antibody.



Immunocytochemistry analysis of EpCAM (green) in MCF-7 using EpCAM antibody, and DAPI (blue).



Immunohistochemistry analysis of paraffin-embedded Human breast cancer using EpCAM antibody. High-pressure and temperature Sodium Citrate pH 6.0 was used for antigen retrieval.