

Product Name: Epac1 Rabbit Monoclonal Antibody**Catalog #: AMRe85541**

For research use only.

Summary

Description	Recombinant rabbit monoclonal antibody
Host	Rabbit
Application	WB,IP
Reactivity	Human,Mouse
Conjugation	Unconjugated
Modification	Unmodified
Isotype	IgG
Clonality	Monoclonal
Form	Liquid
Concentration	
Storage	Aliquot and store at -20°C (valid for 12 months). Avoid freeze/thaw cycles.
Shipping	Ice bags
Buffer	Purified antibody in TBS with 0.05% sodium azide,0.05%protective protein and 50% glycerol.
Purification	Affinity Purification

Application

Dilution Ratio	WB 1:500-1:1000,IP 1:10-1:20
Molecular Weight	Calculated MW: 104 kDa; Observed MW: 104 kDa

Antigen Information

Gene Name	Epac1 RAPGEF3; CGEF1; EPAC; EPAC1; Rap guanine nucleotide exchange factor 3; Exchange factor
Alternative Names	directly activated by cAMP 1; Exchange protein directly activated by cAMP 1; EPAC 1; Rap1 guanine-nucleotide-exchange factor directly activated by cAMP
Gene ID	10411.0
SwissProt ID	O95398
Immunogen	A synthetic peptide of human Epac1

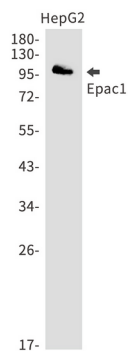
Background

The activation of RaP1 by cAMP is independent of PKA and is mediated by recently discovered family of guanine nucleotide

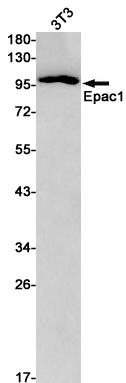
exchange factors (GEFs) called cAMP-GEFs or Epacs. The Epac signaling therefore represents a novel mechanism for cAMP signaling with in the cAMP cascade.

Research Area

Image Data



Western blot analysis of Epac1 in HepG2 lysates using Epac1 antibody.



Western blot analysis of Epac1 in 3T3 lysates using Epac1 antibody.