

**Product Name: ELK1 Rabbit Monoclonal Antibody****Catalog #: AMRe85533**

For research use only.

**Summary**

|                      |  |
|----------------------|--|
| <b>Description</b>   | Recombinant rabbit monoclonal antibody   |
| <b>Host</b>          | Rabbit   |
| <b>Application</b>   | WB,IHC,IP  |
| <b>Reactivity</b>    | Human  |
| <b>Conjugation</b>   | Unconjugated   |
| <b>Modification</b>  | Unmodified   |
| <b>Isotype</b>       | IgG  |
| <b>Clonality</b>     | Monoclonal   |
| <b>Form</b>          | Liquid   |
| <b>Concentration</b> |  |
| <b>Storage</b>       | Aliquot and store at -20°C (valid for 12 months). Avoid freeze/thaw cycles.                |
| <b>Shipping</b>      | Ice bags   |
| <b>Buffer</b>        | Purified antibody in TBS with 0.05% sodium azide,0.05%protective protein and 50% glycerol. |
| <b>Purification</b>  | Affinity Purification  |

**Application**

|                         |   |
|-------------------------|---|
| <b>Dilution Ratio</b>   | WB 1:500-1:1000,IHC 1:50-1:100,IP 1:10-1:20 |
| <b>Molecular Weight</b> | Calculated MW: 45 kDa; Observed MW: 62 kDa  |

**Antigen Information**

|                          |                                     |
|--------------------------|-------------------------------------|
| <b>Gene Name</b>         | ELK1                                |
| <b>Alternative Names</b> | ETS domain-containing protein Elk-1 |
| <b>Gene ID</b>           | 2002.0                              |
| <b>SwissProt ID</b>      | P19419                              |
| <b>Immunogen</b>         | A synthetic peptide of human ELK1   |

**Background**

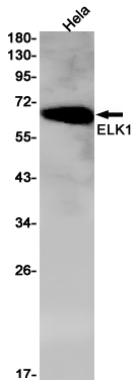
This gene is a member of the Ets family of transcription factors and of the ternary complex factor (TCF) subfamily. Proteins of the TCF subfamily form a ternary complex by binding to the the serum response factor and the serum reponse element in the promoter of the c-fos proto-oncogene. The protein encoded by this gene is a nuclear target for the ras-raf-MAPK signaling

cascade.

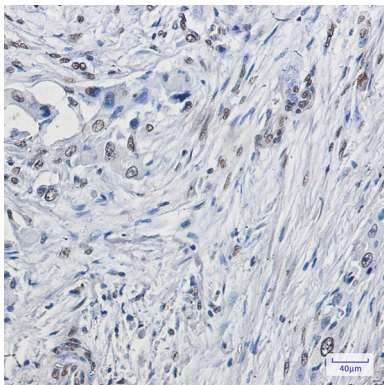
## Research Area

MAPK signaling pathway

## Image Data



Western blot analysis of ELK1 in HeLa lysates using ELK1 antibody.



Immunohistochemistry analysis of paraffin-embedded Human lung cancer using ELK1 antibody. High-pressure and temperature Sodium Citrate pH 6.0 was used for antigen retrieval.