

Product Name: eIF1A Rabbit Monoclonal Antibody**Catalog #: AMRe85525**

For research use only.

Summary

Description	Recombinant rabbit monoclonal antibody
Host	Rabbit
Application	WB,IHC,ICC,IP
Reactivity	Human,Mouse,Rat
Conjugation	Unconjugated
Modification	Unmodified
Isotype	IgG
Clonality	Monoclonal
Form	Liquid
Concentration	0.53mg/ml. The concentration of this product may be batch-dependent.
Storage	Aliquot and store at -20°C (valid for 12 months). Avoid freeze/thaw cycles.
Shipping	Ice bags
Buffer	Purified antibody in TBS with 0.05% sodium azide,0.05%protective protein and 50% glycerol.
Purification	Affinity Purification

Application

Dilution Ratio	WB 1:500-1:1000,IHC 1:50-1:100,ICC 1:50-1:200,IP 1:10-1:20
Molecular Weight	Calculated MW: 16 kDa; Observed MW: 16 kDa

Antigen Information

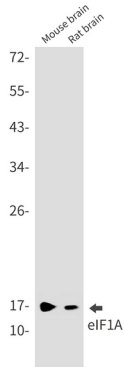
Gene Name	eIF1A
Alternative Names	EIF1A; EIF4C; eIF-1A; eIF-4C; EIF1AP1
Gene ID	1964.0
SwissProt ID	P47813
Immunogen	A synthetic peptide of human eIF1A

Background

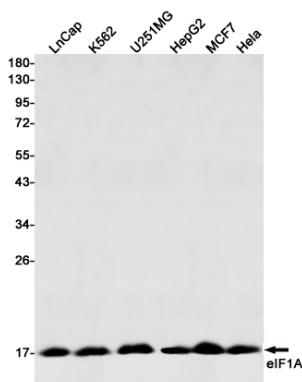
Seems to be required for maximal rate of protein biosynthesis. Enhances ribosome dissociation into subunits and stabilizes the binding of the initiator Met-tRNA(I) to 40 S ribosomal subunits.

Research Area

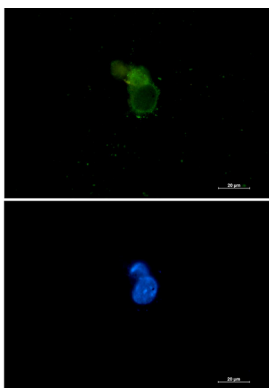
Image Data



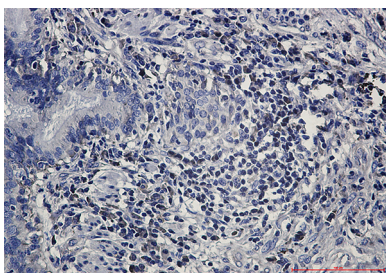
Western blot analysis of eIF1A in mouse brain, rat brain lysates using eIF1A antibody.



Western blot analysis of eIF1A in LnCap, K562, U251MG, HepG2, MCF-7, HeLa lysates using eIF1A antibody



Immunocytochemistry analysis of eIF1A (green) in 293 using eIF1A antibody, and DAPI (blue).



Immunohistochemistry analysis of paraffin-embedded Human lung cancer using eIF1A antibody. High-pressure and temperature Sodium Citrate pH 6.0 was used for antigen retrieval.