
Product Name: EHD1 Rabbit Monoclonal Antibody**Catalog #: AMRe85524**

For research use only.

Summary

Description	Recombinant rabbit monoclonal antibody
Host	Rabbit
Application	WB,IHC,ICC,IP
Reactivity	Human,Mouse,Rat
Conjugation	Unconjugated
Modification	Unmodified
Isotype	IgG
Clonality	Monoclonal
Form	Liquid
Concentration	0.62mg/ml. The concentration of this product may be batch-dependent.
Storage	Aliquot and store at -20°C (valid for 12 months). Avoid freeze/thaw cycles.
Shipping	Ice bags
Buffer	Purified antibody in TBS with 0.05% sodium azide,0.05%protective protein and 50% glycerol.
Purification	Affinity Purification

Application

Dilution Ratio	WB 1:500-1:1000,IHC 1:50-1:100,ICC 1:50-1:200,IP 1:10-1:20
Molecular Weight	Calculated MW: 61 kDa; Observed MW: 61 kDa

Antigen Information

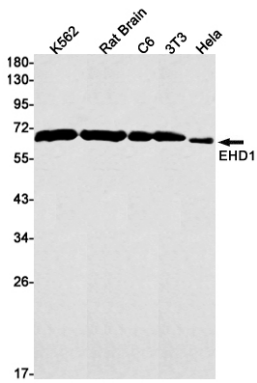
Gene Name	EHD1
Alternative Names	EHD1; H PAST; hPAST1; PAST; PAST homolog 1; PAST1; Tilin
Gene ID	10938.0
SwissProt ID	Q9H4M9
Immunogen	A synthetic peptide of human EHD1

Background

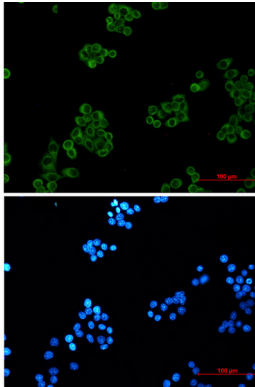
Acts in early endocytic membrane fusion and membrane trafficking of recycling endosomes.

Research Area

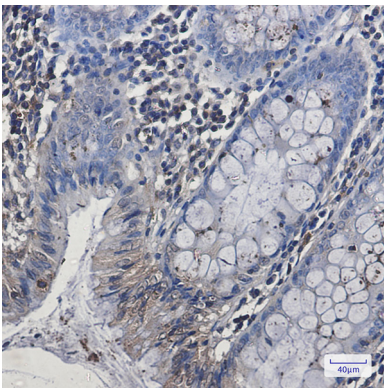
Image Data



Western blot analysis of EHD1 in K562, rat Brain, C6, 3T3, HeLa lysates using EHD1 antibody.



Immunocytochemistry analysis of EHD1 (green) in HeLa using EHD1 antibody, and DAPI (blue).



Immunohistochemistry analysis of paraffin-embedded Human colon cancer tissue using EHD1 antibody. High-pressure and temperature Sodium Citrate pH 6.0 was used for antigen retrieval.