
Product Name: Elongation Factor 1A1 Rabbit Monoclonal Antibody**Catalog #: AMRe85523**

For research use only.

Summary

| | |
|----------------------|--|
| Description | Recombinant rabbit monoclonal antibody |
| Host | Rabbit |
| Application | WB,IHC,IP |
| Reactivity | Human,Mouse,Rat |
| Conjugation | Unconjugated |
| Modification | Unmodified |
| Isotype | IgG |
| Clonality | Monoclonal |
| Form | Liquid |
| Concentration | |
| Storage | Aliquot and store at -20°C (valid for 12 months). Avoid freeze/thaw cycles. |
| Shipping | Ice bags |
| Buffer | Purified antibody in TBS with 0.05% sodium azide,0.05%protective protein and 50% glycerol. |
| Purification | Affinity Purification |

Application

| | |
|-------------------------|---|
| Dilution Ratio | WB 1:500-1:1000,IHC 1:50-1:100,IP 1:10-1:20 |
| Molecular Weight | Calculated MW: 50 kDa; Observed MW: 50 kDa |

Antigen Information

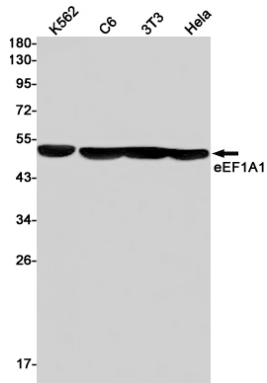
| | |
|--------------------------|--|
| Gene Name | Elongation Factor 1A1 |
| Alternative Names | EEF1A1; CCS-3; CCS3; EEF-1; EEF1A; EF-Tu; EF1A; GRAF-1EF; LENG7; PTI1; eEF1A-1 |
| Gene ID | 1915.0 |
| SwissProt ID | P68104 |
| Immunogen | A synthetic peptide of human eEF1A1 |

Background

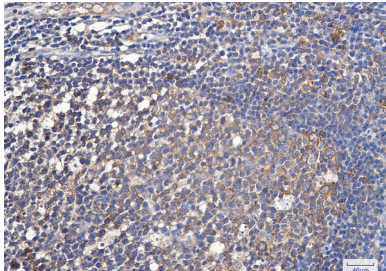
This protein promotes the GTP-dependent binding of aminoacyl-tRNA to the A-site of ribosomes during protein biosynthesis.

Research Area

Image Data



Western blot analysis of eEF1A1 in K562, C6, 3T3, HeLa lysates using Elongation Factor 1A1 antibody.



Immunohistochemistry analysis of paraffin-embedded Human tonsil using eEF1A1 antibody. High-pressure and temperature Sodium Citrate pH 6.0 was used for antigen retrieval.