

---

**Product Name: DPD Rabbit Monoclonal Antibody****Catalog #: AMRe85518**

For research use only.

**Summary**

<b>Description</b>	Recombinant rabbit monoclonal antibody
<b>Host</b>	Rabbit
<b>Application</b>	WB,IHC,ICC
<b>Reactivity</b>	Human,Rat
<b>Conjugation</b>	Unconjugated
<b>Modification</b>	Unmodified
<b>Isotype</b>	IgG
<b>Clonality</b>	Monoclonal
<b>Form</b>	Liquid
<b>Concentration</b>	0.62mg/ml. The concentration of this product may be batch-dependent.
<b>Storage</b>	Aliquot and store at -20°C (valid for 12 months). Avoid freeze/thaw cycles.
<b>Shipping</b>	Ice bags
<b>Buffer</b>	Purified antibody in TBS with 0.05% sodium azide,0.05%protective protein and 50% glycerol.
<b>Purification</b>	Affinity Purification

**Application**

<b>Dilution Ratio</b>	WB 1:500-1:1000,IHC 1:50-1:100,ICC 1:50-1:200
<b>Molecular Weight</b>	Calculated MW: 111 kDa; Observed MW: 111 kDa

**Antigen Information**

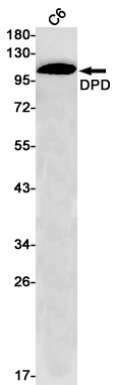
<b>Gene Name</b>	DPD
<b>Alternative Names</b>	DPYD; Dihydropyrimidine dehydrogenase [NADP(+)]; DHPDHase; DPD; Dihydrothymine dehydrogenase; Dihydrouracil dehydrogenase
<b>Gene ID</b>	1806.0
<b>SwissProt ID</b>	Q12882
<b>Immunogen</b>	A synthetic peptide of human DPD

**Background**

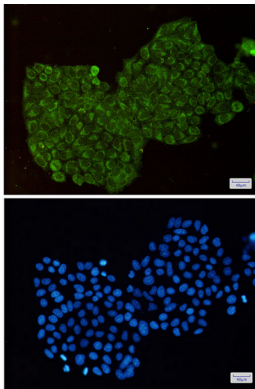
Involved in pyrimidine base degradation. Catalyzes the reduction of uracil and thymine. Also involved the degradation of the chemotherapeutic drug 5-fluorouracil.

## Research Area

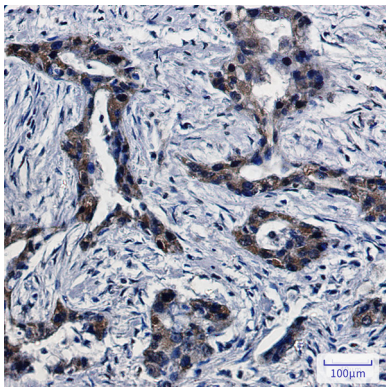
## Image Data



Western blot analysis of DPD in C6 lysates using DPD antibody.



Immunocytochemistry analysis of DPD (green) in HeLa using DPD antibody, and DAPI (blue)



Immunohistochemistry analysis of paraffin-embedded Human lung cancer using DPD antibody. High-pressure and temperature Sodium Citrate pH 6.0 was used for antigen retrieval.