
Product Name: DOCK2 Rabbit Monoclonal Antibody**Catalog #: AMRe85515**

For research use only.

Summary

Description	Recombinant rabbit monoclonal antibody
Host	Rabbit
Application	WB,IHC
Reactivity	Human
Conjugation	Unconjugated
Modification	Unmodified
Isotype	IgG
Clonality	Monoclonal
Form	Liquid
Concentration	
Storage	Aliquot and store at -20°C (valid for 12 months). Avoid freeze/thaw cycles.
Shipping	Ice bags
Buffer	Purified antibody in TBS with 0.05% sodium azide,0.05%protective protein and 50% glycerol.
Purification	Affinity Purification

Application

Dilution Ratio	WB 1:500-1:1000,IHC 1:50-1:100
Molecular Weight	Calculated MW: 212 kDa; Observed MW: 212 kDa

Antigen Information

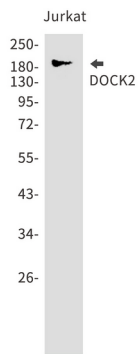
Gene Name	DOCK2
Alternative Names	DOCK 2; IMD40
Gene ID	1794.0
SwissProt ID	Q92608
Immunogen	A synthetic peptide of human DOCK2

Background

Involved in cytoskeletal rearrangements required for lymphocyte migration in response of chemokines. Activates RAC1 and RAC2, but not CDC42, by functioning as a guanine nucleotide exchange factor (GEF), which exchanges bound GDP for free GTP.

Research Area

Image Data



Western blot analysis of DOCK2 in Jurkat lysates using DOCK2 antibody.