

Product Name: DKC1 Rabbit Monoclonal Antibody**Catalog #: AMRe85509**

For research use only.

Summary

Description	Recombinant rabbit monoclonal antibody
Host	Rabbit
Application	WB,IHC,ICC
Reactivity	Human,Mouse,Rat
Conjugation	Unconjugated
Modification	Unmodified
Isotype	IgG
Clonality	Monoclonal
Form	Liquid
Concentration	0.62mg/ml. The concentration of this product may be batch-dependent.
Storage	Aliquot and store at -20°C (valid for 12 months). Avoid freeze/thaw cycles.
Shipping	Ice bags
Buffer	Purified antibody in TBS with 0.05% sodium azide,0.05%protective protein and 50% glycerol.
Purification	Affinity Purification

Application

Dilution Ratio	WB 1:500-1:1000,IHC 1:50-1:100,ICC 1:50-1:200
Molecular Weight	Calculated MW: 58 kDa; Observed MW: 58 kDa

Antigen Information

Gene Name	DKC1 DKC1; NOLA4; H/ACA ribonucleoprotein complex subunit 4; CBF5 homolog; Dyskerin;
Alternative Names	Nopp140-associated protein of 57 kDa; Nucleolar protein NAP57; Nucleolar protein family A member 4; snoRNP protein DKC1
Gene ID	1736.0
SwissProt ID	O60832
Immunogen	A synthetic peptide of human DKC1

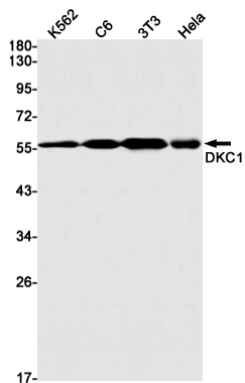
Background

Required for ribosome biogenesis and telomere maintenance. Probable catalytic subunit of H/ACA small nucleolar

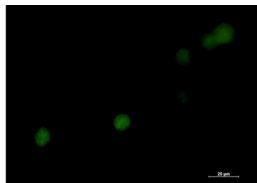
ribonucleoprotein (H/ACA snoRNP) complex, which catalyzes pseudouridylation of rRNA. This involves the isomerization of uridine such that the ribose is subsequently attached to C5, instead of the normal N1.

Research Area

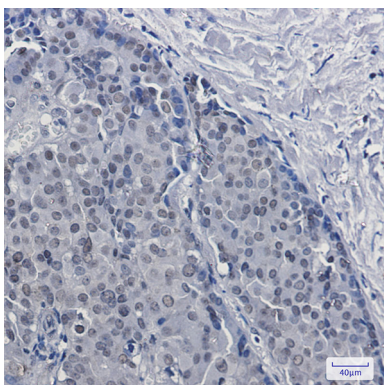
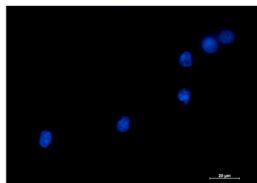
Image Data



Western blot analysis of DKC1 in K562, C6, 3T3, HeLa lysates using DKC1 antibody.



Immunocytochemistry analysis of DKC1 (green) in K562 using DKC1 antibody, and DAPI (blue).



Immunohistochemistry analysis of paraffin-embedded Human breast cancer tissue using DKC1 antibody. High-pressure and temperature Sodium Citrate pH 6.0 was used for antigen retrieval.