

---

**Product Name: DGCR8 Rabbit Monoclonal Antibody****Catalog #: AMRe85504**

For research use only.

**Summary**

<b>Description</b>	Recombinant rabbit monoclonal antibody
<b>Host</b>	Rabbit
<b>Application</b>	WB,ICC,IP
<b>Reactivity</b>	Human,Mouse,Rat
<b>Conjugation</b>	Unconjugated
<b>Modification</b>	Unmodified
<b>Isotype</b>	IgG
<b>Clonality</b>	Monoclonal
<b>Form</b>	Liquid
<b>Concentration</b>	
<b>Storage</b>	Aliquot and store at -20°C (valid for 12 months). Avoid freeze/thaw cycles.
<b>Shipping</b>	Ice bags
<b>Buffer</b>	Purified antibody in TBS with 0.05% sodium azide,0.05%protective protein and 50% glycerol.
<b>Purification</b>	Affinity Purification

**Application**

<b>Dilution Ratio</b>	WB 1:500-1:1000,ICC 1:50-1:200,IP 1:10-1:20
<b>Molecular Weight</b>	Calculated MW: 86 kDa; Observed MW: 120 kDa

**Antigen Information**

<b>Gene Name</b>	DGCR8
<b>Alternative Names</b>	DGCR8; DGCRK6; Gy1; C22orf12; D16Wis2; pasha
<b>Gene ID</b>	54487.0
<b>SwissProt ID</b>	Q8WYQ5
<b>Immunogen</b>	Recombinant protein of human DGCR8

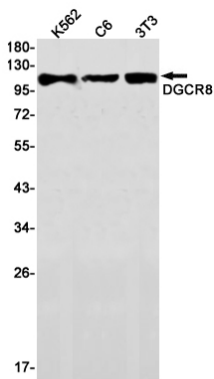
**Background**

Component of the microprocessor complex that is required to process primary miRNA transcripts (pri-miRNAs) to release precursor miRNA (pre-miRNA) in the nucleus. Within the microprocessor complex, DGCR8 function as a molecular anchor necessary for the recognition of pri-miRNA at dsRNA-ssRNA junction and directs DROSHA to cleave 11 bp away form the

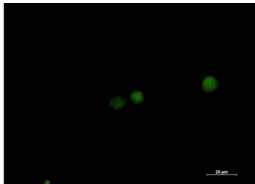
junction to release hairpin-shaped pre-miRNAs that are subsequently cut by the cytoplasmic DICER to generate mature miRNAs.

## Research Area

## Image Data



Western blot analysis of DGCR8 in K562, C6, 3T3 lysates using DGCR8 antibody.



Immunocytochemistry analysis of DGCR8 (green) in K562 using DGCR8 antibody, and DAPI (blue).

