
Product Name: DCAMKL1 Rabbit Monoclonal Antibody**Catalog #: AMRe85494**

For research use only.

Summary

Description	Recombinant rabbit monoclonal antibody
Host	Rabbit
Application	WB,IHC,ICC
Reactivity	Human,Mouse,Rat
Conjugation	Unconjugated
Modification	Unmodified
Isotype	IgG
Clonality	Monoclonal
Form	Liquid
Concentration	0.53mg/ml. The concentration of this product may be batch-dependent.
Storage	Aliquot and store at -20°C (valid for 12 months). Avoid freeze/thaw cycles.
Shipping	Ice bags
Buffer	Purified antibody in TBS with 0.05% sodium azide,0.05%protective protein and 50% glycerol.
Purification	Affinity Purification

Application

Dilution Ratio	WB 1:500-1:1000,IHC 1:50-1:100,ICC 1:50-1:200
Molecular Weight	Calculated MW: 82 kDa; Observed MW: 82 kDa

Antigen Information

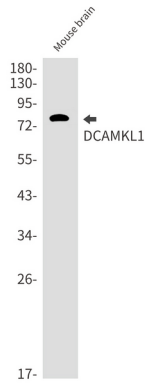
Gene Name	DCAMKL1
Alternative Names	doublecortin-like kinase 1; CL1; DCLK; CLICK1; DCDC3A; DCAMKL1
Gene ID	9201.0
SwissProt ID	O15075
Immunogen	A synthetic peptide of human DCAMKL1

Background

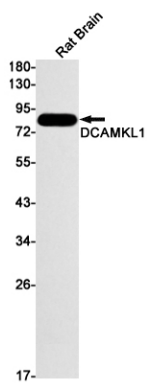
Probable kinase that may be involved in a calcium-signaling pathway controlling neuronal migration in the developing brain. May also participate in functions of the mature nervous system.

Research Area

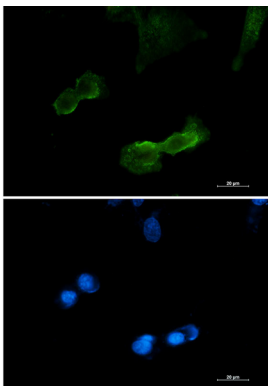
Image Data



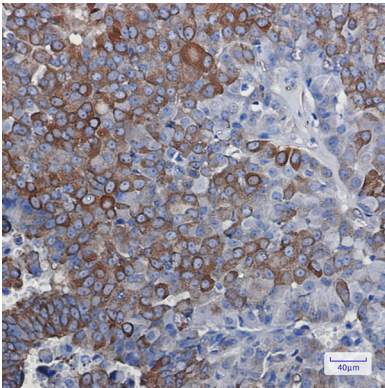
Western blot analysis of DCAMKL1 in mouse brain lysates using DCAMKL1 antibody.



Western blot analysis of DCAMKL1 in rat Brain lysates using DCAMKL1 antibody



Immunocytochemistry analysis of DCAMKL1 (green) in U87-MG using DCAMKL1 antibody, and DAPI (blue).



Immunohistochemistry analysis of paraffin-embedded Human breast cancer using DCAMKL1 antibody. High-pressure and temperature Sodium Citrate pH 6.0 was used for antigen retrieval.