
Product Name: DARPP32 Rabbit Monoclonal Antibody**Catalog #: AMRe85489**

For research use only.

Summary

Description	Recombinant rabbit monoclonal antibody
Host	Rabbit
Application	WB,IHC,IP
Reactivity	Human,Mouse,Rat
Conjugation	Unconjugated
Modification	Unmodified
Isotype	IgG
Clonality	Monoclonal
Form	Liquid
Concentration	0.62mg/ml. The concentration of this product may be batch-dependent.
Storage	Aliquot and store at -20°C (valid for 12 months). Avoid freeze/thaw cycles.
Shipping	Ice bags
Buffer	Purified antibody in TBS with 0.05% sodium azide,0.05%protective protein and 50% glycerol.
Purification	Affinity Purification

Application

Dilution Ratio	WB 1:500-1:1000,IHC 1:50-1:100,IP 1:10-1:20
Molecular Weight	Calculated MW: 23 kDa; Observed MW: 32 kDa

Antigen Information

Gene Name	DARPP32
Alternative Names	PPP1R1B; DARPP32; Protein phosphatase 1 regulatory subunit 1B; DARPP-32; Dopamine- and cAMP-regulated neuronal phosphoprotein
Gene ID	84152.0
SwissProt ID	Q9UD71
Immunogen	A synthetic peptide of human DARPP32

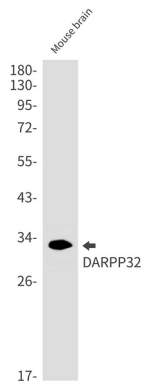
Background

DARPP-32 a member of the protein phosphatase inhibitor 1 family. A dopamine- and cyclic AMP-regulated neuronal phosphoprotein. Both dopaminergic and glutamatergic (NMDA) receptor stimulation regulate the extent of DARPP32

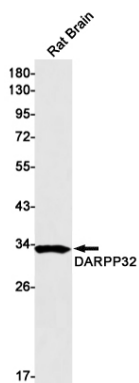
phosphorylation, but in opposite directions.

Research Area

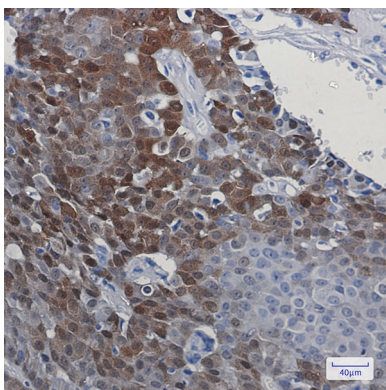
Image Data



Western blot analysis of DARPP32 in mouse brain lysates using DARPP32 antibody.



Western blot analysis of DARPP32 in rat Brain lysates using DARPP32 antibody.



Immunohistochemistry analysis of paraffin-embedded Human breast cancer using DARPP32 antibody. High-pressure and temperature Sodium Citrate pH 6.0 was used for antigen retrieval.