

Product Name: CYFIP1 Rabbit Monoclonal Antibody**Catalog #: AMRe85477**

For research use only.

Summary

Description	Recombinant rabbit monoclonal antibody
Host	Rabbit
Application	WB
Reactivity	Human,Mouse,Rat
Conjugation	Unconjugated
Modification	Unmodified
Isotype	IgG
Clonality	Monoclonal
Form	Liquid
Concentration	
Storage	Aliquot and store at -20°C (valid for 12 months). Avoid freeze/thaw cycles.
Shipping	Ice bags
Buffer	Purified antibody in TBS with 0.05% sodium azide,0.05%protective protein and 50% glycerol.
Purification	Affinity Purification

Application

Dilution Ratio	WB 1:500-1:1000
Molecular Weight	Calculated MW: 145 kDa; Observed MW: 145 kDa

Antigen Information

Gene Name	CYFIP1
Alternative Names	SHYC; SRA1; SRA-1; P140SRA-1
Gene ID	23191.0
SwissProt ID	Q7L576
Immunogen	A synthetic peptide of human CYFIP1

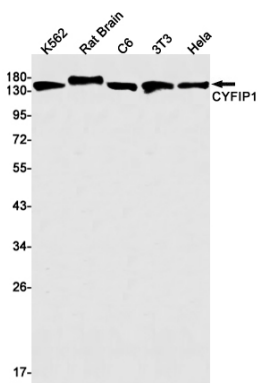
Background

Component of the CYFIP1-EIF4E-FMR1 complex which binds to the mRNA cap and mediates translational repression. In the CYFIP1-EIF4E-FMR1 complex this subunit is an adapter between EIF4E and FMR1. Promotes the translation repression activity of FMR1 in brain probably by mediating its association with EIF4E and mRNA . Regulates formation of membrane ruffles and

lamellipodia. Plays a role in axon outgrowth. Binds to F-actin but not to RNA. Part of the WAVE complex that regulates actin filament reorganization via its interaction with the Arp2/3 complex. Actin remodeling activity is regulated by RAC1. Regulator of epithelial morphogenesis. As component of the WAVE1 complex, required for BDNF-NTRK2 endocytic trafficking and signaling from early endosomes . May act as an invasion suppressor in cancers.

Research Area

Image Data



Western blot analysis of CYFIP1 in K562, rat Brain, C6, 3T3, HeLa lysates using CYFIP1 antibody.