
Product Name: Cyclin E2 Rabbit Monoclonal Antibody**Catalog #: AMRe85474**

For research use only.

Summary

Description	Recombinant rabbit monoclonal antibody
Host	Rabbit
Application	WB,IHC,ICC
Reactivity	Human
Conjugation	Unconjugated
Modification	Unmodified
Isotype	IgG
Clonality	Monoclonal
Form	Liquid
Concentration	0.62mg/ml. The concentration of this product may be batch-dependent.
Storage	Aliquot and store at -20°C (valid for 12 months). Avoid freeze/thaw cycles.
Shipping	Ice bags
Buffer	Purified antibody in TBS with 0.05% sodium azide,0.05%protective protein and 50% glycerol.
Purification	Affinity Purification

Application

Dilution Ratio	WB 1:500-1:1000,IHC 1:50-1:100,ICC 1:50-1:200
Molecular Weight	Calculated MW: 47 kDa; Observed MW: 47 kDa

Antigen Information

Gene Name	Cyclin E2
Alternative Names	CCNE2; G1/S-specific cyclin-E2
Gene ID	9134.0
SwissProt ID	O96020
Immunogen	A synthetic peptide of human Cyclin E2

Background

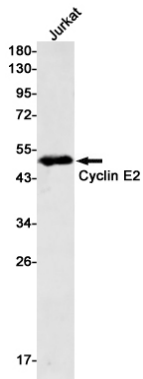
The human Cyclin E2 gene encodes a 404 amino acid protein that is most closely related to Cyclin E. Cyclin E2 mRNA levels peaks at the G1 / S transition. Cyclin E2 associates with Cdk2 in a functional kinase complex that is inhibited by both p27 (Kip1) and p21 (Cip1). Cyclin E2 / Cdk2 phosphorylates histone H1 in vitro. G1 cyclin E controls the initiation of DNA synthesis by

activating CDK2. Abnormally high levels of cyclin E expression have frequently been observed in human cancers.

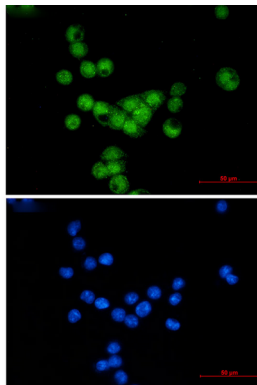
Research Area

PI3K-Akt signaling pathway

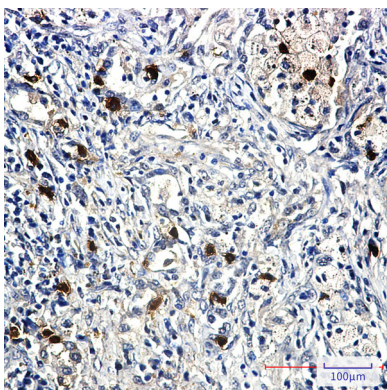
Image Data



Western blot analysis of Cyclin E2 in Jurkat lysates using Cyclin E2 antibody.



Immunocytochemistry analysis of Cyclin E2 (green) in MCF-7 using Cyclin E2 antibody, and DAPI (blue)



Immunohistochemistry analysis of paraffin-embedded Human lung cancer using Cyclin E2 antibody. High-pressure and temperature Sodium Citrate pH 6.0 was used for antigen retrieval.