
Product Name: Cyclin E1 Rabbit Monoclonal Antibody**Catalog #: AMRe85473**

For research use only.

Summary

Description	Recombinant rabbit monoclonal antibody
Host	Rabbit
Application	WB
Reactivity	Human
Conjugation	Unconjugated
Modification	Unmodified
Isotype	IgG
Clonality	Monoclonal
Form	Liquid
Concentration	
Storage	Aliquot and store at -20°C (valid for 12 months). Avoid freeze/thaw cycles.
Shipping	Ice bags
Buffer	Purified antibody in TBS with 0.05% sodium azide, 0.05% protective protein and 50% glycerol.
Purification	Affinity Purification

Application

Dilution Ratio	WB 1:500-1:1000
Molecular Weight	Calculated MW: 47 kDa; Observed MW: 47 kDa

Antigen Information

Gene Name	Cyclin E1
Alternative Names	CCNE1; CCNE; G1/S-specific cyclin-E1
Gene ID	898.0
SwissProt ID	P24864
Immunogen	A synthetic peptide of human Cyclin E1

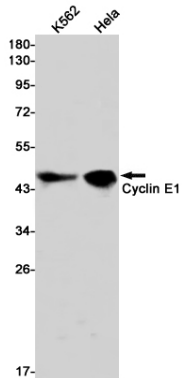
Background

Essential for the control of the cell cycle at the G1/S (start) transition. a member of the highly conserved cyclin family, whose members are characterized by a dramatic periodicity in protein abundance through the cell cycle. Cyclins function as regulators of CDK kinases.

Research Area

PI3K-Akt signaling pathway, mTOR signaling pathway

Image Data



Western blot analysis of Cyclin E1 in K562, HeLa lysates using Cyclin E1 antibody.