

**Product Name: Cullin 4A/4B Rabbit Monoclonal Antibody****Catalog #: AMRe85466**

For research use only.

**Summary**

|                      |  |
|----------------------|--|
| <b>Description</b>   | Recombinant rabbit monoclonal antibody   |
| <b>Host</b>          | Rabbit   |
| <b>Application</b>   | WB,IHC   |
| <b>Reactivity</b>    | Human,Rat,Hamster  |
| <b>Conjugation</b>   | Unconjugated   |
| <b>Modification</b>  | Unmodified   |
| <b>Isotype</b>       | IgG  |
| <b>Clonality</b>     | Monoclonal   |
| <b>Form</b>          | Liquid   |
| <b>Concentration</b> |  |
| <b>Storage</b>       | Aliquot and store at -20°C (valid for 12 months). Avoid freeze/thaw cycles.                |
| <b>Shipping</b>      | Ice bags   |
| <b>Buffer</b>        | Purified antibody in TBS with 0.05% sodium azide,0.05%protective protein and 50% glycerol. |
| <b>Purification</b>  | Affinity Purification  |

**Application**

|                         |   |
|-------------------------|---|
| <b>Dilution Ratio</b>   | WB 1:500-1:1000,IHC 1:50-1:100                  |
| <b>Molecular Weight</b> | Calculated MW: 104 kDa; Observed MW: 88,104 kDa |

**Antigen Information**

|                          |  |
|--------------------------|--|
| <b>Gene Name</b>         | Cullin 4A/4B                           |
| <b>Alternative Names</b> | CUL4B; KIAA0695; Cullin-4B; CUL-4B     |
| <b>Gene ID</b>           | 8450.0                                 |
| <b>SwissProt ID</b>      | Q13620                                 |
| <b>Immunogen</b>         | A synthetic peptide of human Cullin 4B |

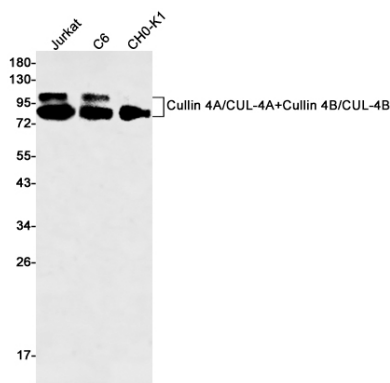
**Background**

Core component of multiple cullin-RING-based E3 ubiquitin-protein ligase complexes which mediate the ubiquitination and subsequent proteasomal degradation of target proteins. The functional specificity of the E3 ubiquitin-protein ligase complex depends on the variable substrate recognition subunit. CUL4B may act within the complex as a scaffold protein, contributing to

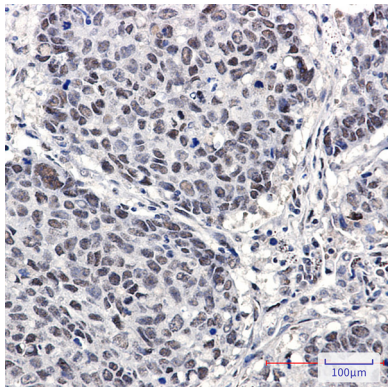
catalysis through positioning of the substrate and the ubiquitin-conjugating enzyme. Plays a role as part of the E3 ubiquitin-protein ligase complex in polyubiquitination of CDT1, histone H2A, histone H3 and histone H4 in response to radiation-induced DNA damage. Targeted to UV damaged chromatin by DDB2 and may be important for DNA repair and DNA replication. Required for ubiquitination of cyclin E, and consequently, normal G1 cell cycle progression. Regulates the mammalian target-of-rapamycin (mTOR) pathway involved in control of cell growth, size and metabolism. Specific CUL4B regulation of the mTORC1-mediated pathway is dependent upon 26S proteasome function and requires interaction between CUL4B and MLST8.

## Research Area

### Image Data



Western blot analysis of Cullin 4A/CUL4A+Cullin 4B/CUL4B in Jurkat, C6, CHO-K1 lysates using Cullin 4A/4B antibody.



Immunohistochemistry analysis of paraffin-embedded Human lung cancer using Cullin 4A/B antibody. High-pressure and temperature Sodium Citrate pH 6.0 was used for antigen retrieval.