

---

**Product Name: CRM1 Rabbit Monoclonal Antibody****Catalog #: AMRe85456**

For research use only.

**Summary**

<b>Description</b>	Recombinant rabbit monoclonal antibody
<b>Host</b>	Rabbit
<b>Application</b>	WB,IHC,ICC
<b>Reactivity</b>	Human,Mouse,Rat
<b>Conjugation</b>	Unconjugated
<b>Modification</b>	Unmodified
<b>Isotype</b>	IgG
<b>Clonality</b>	Monoclonal
<b>Form</b>	Liquid
<b>Concentration</b>	
<b>Storage</b>	Aliquot and store at -20°C (valid for 12 months). Avoid freeze/thaw cycles.
<b>Shipping</b>	Ice bags
<b>Buffer</b>	Purified antibody in TBS with 0.05% sodium azide,0.05%protective protein and 50% glycerol.
<b>Purification</b>	Affinity Purification

**Application**

<b>Dilution Ratio</b>	WB 1:500-1:1000,IHC 1:50-1:100,ICC 1:50-1:200
<b>Molecular Weight</b>	Calculated MW: 123 kDa; Observed MW: 123 kDa

**Antigen Information**

<b>Gene Name</b>	CRM1
<b>Alternative Names</b>	XPO1; CRM1; Exportin-1; Exp1; Chromosome region maintenance 1 protein homolog
<b>Gene ID</b>	7514.0
<b>SwissProt ID</b>	O14980
<b>Immunogen</b>	A synthetic peptide of human CRM1

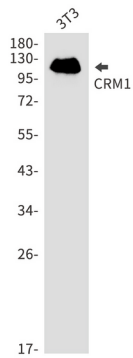
**Background**

Mediates the nuclear export of cellular proteins (cargos) bearing a leucine-rich nuclear export signal (NES) and of RNAs. In the nucleus, in association with RANBP3, binds cooperatively to the NES on its target protein and to the GTPase RAN in its active GTP-bound form (Ran-GTP). Docking of this complex to the nuclear pore complex (NPC) is mediated through binding to

nucleoporins.

## Research Area

## Image Data



Western blot analysis of CRM1 in 3T3 lysates using CRM1 antibody.