

Product Name: CREB Rabbit Monoclonal Antibody**Catalog #: AMRe85455**

For research use only.

Summary

Description	Recombinant rabbit monoclonal antibody
Host	Rabbit
Application	WB,IHC,IP
Reactivity	Human,Mouse,Rat
Conjugation	Unconjugated
Modification	Unmodified
Isotype	IgG
Clonality	Monoclonal
Form	Liquid
Concentration	0.62mg/ml. The concentration of this product may be batch-dependent.
Storage	Aliquot and store at -20°C (valid for 12 months). Avoid freeze/thaw cycles.
Shipping	Ice bags
Buffer	Purified antibody in TBS with 0.05% sodium azide,0.05%protective protein and 50% glycerol.
Purification	Affinity Purification

Application

Dilution Ratio	WB 1:500-1:1000,IHC 1:50-1:100,IP 1:10-1:20
Molecular Weight	Calculated MW: 35 kDa; Observed MW: 43 kDa

Antigen Information

Gene Name	CREB
Alternative Names	CREB1; Cyclic AMP-responsive element-binding protein 1; CREB-1; cAMP-responsive element-binding protein 1
Gene ID	1385.0
SwissProt ID	P16220
Immunogen	A synthetic peptide of human CREB

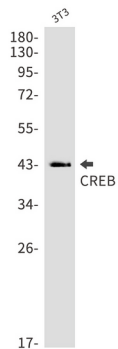
Background

This gene encodes a transcription factor that is a member of the leucine zipper family of DNA binding proteins. This protein binds as a homodimer to the cAMP-responsive element, an octameric palindrome.

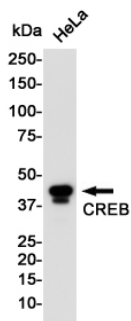
Research Area

PI3K-Akt signaling pathway

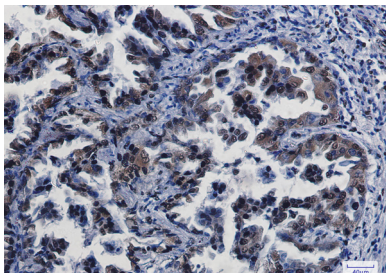
Image Data



Western blot analysis of CREB in 3T3 lysates using CREB antibody.



Western blot analysis of CREB in HeLa lysates using CREB antibody.



Immunohistochemistry analysis of paraffin-embedded Human lung cancer using CREB antibody. High-pressure and temperature Sodium Citrate pH 6.0 was used for antigen retrieval.