
Product Name: Creatine Kinase B type Rabbit Monoclonal Antibody**Catalog #: AMRe85454**

For research use only.

Summary

Description	Recombinant rabbit monoclonal antibody
Host	Rabbit
Application	WB,IHC,IP
Reactivity	Human,Mouse,Rat
Conjugation	Unconjugated
Modification	Unmodified
Isotype	IgG
Clonality	Monoclonal
Form	Liquid
Concentration	
Storage	Aliquot and store at -20°C (valid for 12 months). Avoid freeze/thaw cycles.
Shipping	Ice bags
Buffer	Purified antibody in TBS with 0.05% sodium azide,0.05%protective protein and 50% glycerol.
Purification	Affinity Purification

Application

Dilution Ratio	WB 1:500-1:1000,IHC 1:50-1:100,IP 1:10-1:20
Molecular Weight	Calculated MW: 43 kDa; Observed MW: 43 kDa

Antigen Information

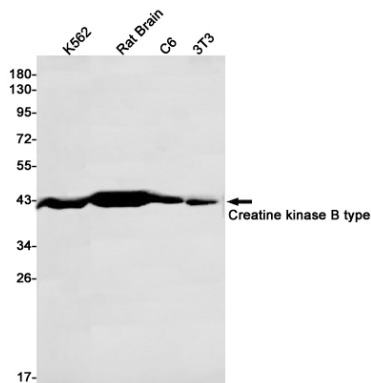
Gene Name	Creatine Kinase B type
Alternative Names	BCK; Ckb; CKBB; HEL 211; HEL S 29
Gene ID	1152.0
SwissProt ID	P12277
Immunogen	A synthetic peptide of human Creatine kinase B type

Background

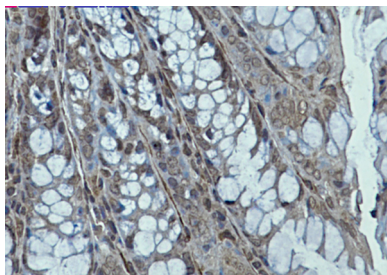
Reversibly catalyzes the transfer of phosphate between ATP and various phosphogens (e.g. creatine phosphate). Creatine kinase isoenzymes play a central role in energy transduction in tissues with large, fluctuating energy demands, such as skeletal muscle, heart, brain and spermatozoa.

Research Area

Image Data



Western blot analysis of Creatine kinase B type in K562, rat Brain, C6, 3T3 lysates using Creatine kinase B type antibody.



Immunohistochemistry analysis of paraffin-embedded mouse colon using Creatine Kinase B type antibody. High-pressure and temperature Sodium Citrate pH 6.0 was used for antigen retrieval.