
Product Name: Clusterin alpha Chain Rabbit Monoclonal Antibody**Catalog #: AMRe85442**

For research use only.

Summary

Description	Recombinant rabbit monoclonal antibody
Host	Rabbit
Application	WB,IP
Reactivity	Rat
Conjugation	Unconjugated
Modification	Unmodified
Isotype	IgG
Clonality	Monoclonal
Form	Liquid
Concentration	
Storage	Aliquot and store at -20°C (valid for 12 months). Avoid freeze/thaw cycles.
Shipping	Ice bags
Buffer	Purified antibody in TBS with 0.05% sodium azide,0.05%protective protein and 50% glycerol.
Purification	Affinity Purification

Application

Dilution Ratio	WB 1:500-1:1000,IP 1:10-1:20
Molecular Weight	Calculated MW: 52 kDa; Observed MW: 42 kDa

Antigen Information

Gene Name	Clusterin alpha Chain
Alternative Names	Cli; ApoJ; Sgp2; SP-40; Sgp-2; Sulp-2; A1893575; D14Ucla3
Gene ID	12759.0
SwissProt ID	Q06890
Immunogen	Recombinant protein of mouse Clusterin alpha chain

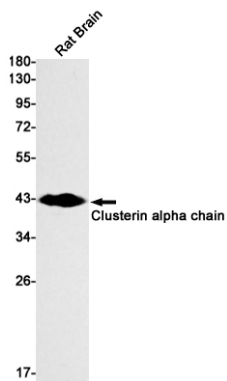
Background

Functions as extracellular chaperone that prevents aggregation of nonnative proteins. Prevents stress-induced aggregation of blood plasma proteins. Inhibits formation of amyloid fibrils by APP, APOC2, B2M, CALCA, CSN3, SNCA and aggregation-prone LYZ variants (in vitro). Does not require ATP. Maintains partially unfolded proteins in a state appropriate for subsequent

refolding by other chaperones, such as HSPA8/HSC70. Does not refold proteins by itself.

Research Area

Image Data



Western blot analysis of Clusterin alpha chain in rat Brain lysates using Clusterin alpha Chain antibody.