
Product Name: Claudin 3 Rabbit Monoclonal Antibody**Catalog #: AMRe85438**

For research use only.

Summary

Description	Recombinant rabbit monoclonal antibody
Host	Rabbit
Application	WB,ICC,IP
Reactivity	Human
Conjugation	Unconjugated
Modification	Unmodified
Isotype	IgG
Clonality	Monoclonal
Form	Liquid
Concentration	
Storage	Aliquot and store at -20°C (valid for 12 months). Avoid freeze/thaw cycles.
Shipping	Ice bags
Buffer	Purified antibody in TBS with 0.05% sodium azide,0.05%protective protein and 50% glycerol.
Purification	Affinity Purification

Application

Dilution Ratio	WB 1:500-1:1000,ICC 1:50-1:200,IP 1:10-1:20
Molecular Weight	Calculated MW: 23 kDa; Observed MW: 20 kDa

Antigen Information

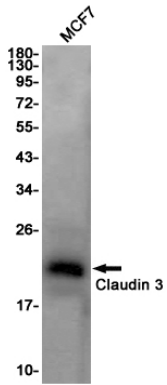
Gene Name	Claudin 3
Alternative Names	RVP1; HRVP1; C7orf1; CPE-R2; CPETR2
Gene ID	1365.0
SwissProt ID	O15551
Immunogen	A synthetic peptide of human Claudin 3

Background

Plays a major role in tight junction-specific obliteration of the intercellular space, through calcium-independent cell-adhesion activity.

Research Area

Image Data



Western blot analysis of Claudin 3 in MCF-7 lysates using Claudin 3 antibody.