

---

**Product Name: CLASP1 Rabbit Monoclonal Antibody****Catalog #: AMRe85437**

For research use only.

**Summary**

<b>Description</b>	Recombinant rabbit monoclonal antibody
<b>Host</b>	Rabbit
<b>Application</b>	WB,IHC,ICC
<b>Reactivity</b>	Human
<b>Conjugation</b>	Unconjugated
<b>Modification</b>	Unmodified
<b>Isotype</b>	IgG
<b>Clonality</b>	Monoclonal
<b>Form</b>	Liquid
<b>Concentration</b>	
<b>Storage</b>	Aliquot and store at -20°C (valid for 12 months). Avoid freeze/thaw cycles.
<b>Shipping</b>	Ice bags
<b>Buffer</b>	Purified antibody in TBS with 0.05% sodium azide,0.05%protective protein and 50% glycerol.
<b>Purification</b>	Affinity Purification

**Application**

<b>Dilution Ratio</b>	WB 1:500-1:1000,IHC 1:50-1:100,ICC 1:50-1:200
<b>Molecular Weight</b>	Calculated MW: 169 kDa; Observed MW: 160 kDa

**Antigen Information**

<b>Gene Name</b>	CLASP1
<b>Alternative Names</b>	CLASP1; KIAA0622; MAST1; CLIP-associating protein 1; Cytoplasmic linker-associated protein 1; Multiple asters homolog 1; Protein Orbit homolog 1; hOrbit1
<b>Gene ID</b>	23332.0
<b>SwissProt ID</b>	Q7Z460
<b>Immunogen</b>	A synthetic peptide of human CLASP1

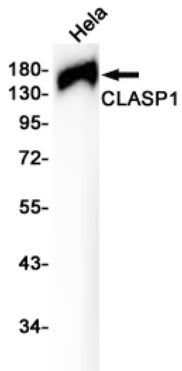
**Background**

Microtubule plus-end tracking protein that promotes the stabilization of dynamic microtubules. Involved in the nucleation of noncentrosomal microtubules originating from the trans-Golgi network (TGN). Required for the polarization of the cytoplasmic

microtubule arrays in migrating cells towards the leading edge of the cell.

## Research Area

## Image Data



Western blot analysis of CLASP1 in HeLa lysates using CLASP1 antibody.