
Product Name: CIP4 Rabbit Monoclonal Antibody**Catalog #: AMRe85435**

For research use only.

Summary

Description	Recombinant rabbit monoclonal antibody
Host	Rabbit
Application	WB,IHC
Reactivity	Human,Mouse
Conjugation	Unconjugated
Modification	Unmodified
Isotype	IgG
Clonality	Monoclonal
Form	Liquid
Concentration	
Storage	Aliquot and store at -20°C (valid for 12 months). Avoid freeze/thaw cycles.
Shipping	Ice bags
Buffer	Purified antibody in TBS with 0.05% sodium azide,0.05%protective protein and 50% glycerol.
Purification	Affinity Purification

Application

Dilution Ratio	WB 1:500-1:1000,IHC 1:50-1:100
Molecular Weight	Calculated MW: 68 kDa; Observed MW: 80 kDa

Antigen Information

Gene Name	CIP4
Alternative Names	STP; CIP4; HSTP; STOT; TRIP-10
Gene ID	9322.0
SwissProt ID	Q15642
Immunogen	A synthetic peptide of human Cip4

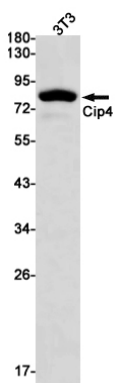
Background

Required for translocation of GLUT4 to the plasma membrane in response to insulin signaling . Required to coordinate membrane tubulation with reorganization of the actin cytoskeleton during endocytosis. Binds to lipids such as phosphatidylinositol 4,5-bisphosphate and phosphatidylserine and promotes membrane invagination and the formation of

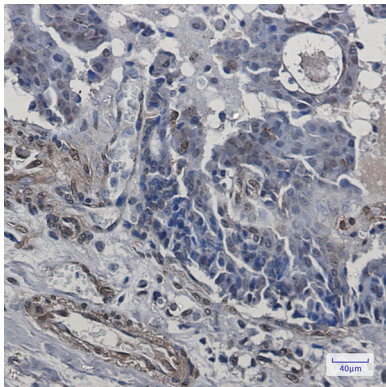
tubules. Also promotes CDC42-induced actin polymerization by recruiting WASL/N-WASP which in turn activates the Arp2/3 complex. Actin polymerization may promote the fission of membrane tubules to form endocytic vesicles. Required for the formation of podosomes, actin-rich adhesion structures specific to monocyte-derived cells. May be required for the lysosomal retention of FASLG/FASL.

Research Area

Image Data



Western blot analysis of Cip4 in 3T3 lysates using CIP4 antibody.



Immunohistochemistry analysis of paraffin-embedded Human breast cancer using Cip4 antibody. High-pressure and temperature Sodium Citrate pH 6.0 was used for antigen retrieval.