

**Product Name: Choline Acetyltransferase Rabbit Monoclonal Antibody****Catalog #: AMRe85433**

For research use only.

**Summary**

<b>Description</b>	Recombinant rabbit monoclonal antibody
<b>Host</b>	Rabbit
<b>Application</b>	WB,ICC,IP
<b>Reactivity</b>	Mouse,Rat
<b>Conjugation</b>	Unconjugated
<b>Modification</b>	Unmodified
<b>Isotype</b>	IgG
<b>Clonality</b>	Monoclonal
<b>Form</b>	Liquid
<b>Concentration</b>	0.62mg/ml. The concentration of this product may be batch-dependent.
<b>Storage</b>	Aliquot and store at -20°C (valid for 12 months). Avoid freeze/thaw cycles.
<b>Shipping</b>	Ice bags
<b>Buffer</b>	Purified antibody in TBS with 0.05% sodium azide,0.05%protective protein and 50% glycerol.
<b>Purification</b>	Affinity Purification

**Application**

<b>Dilution Ratio</b>	WB 1:500-1:1000,ICC 1:50-1:200,IP 1:10-1:20
<b>Molecular Weight</b>	Calculated MW: 83 kDa; Observed MW: 72 kDa

**Antigen Information**

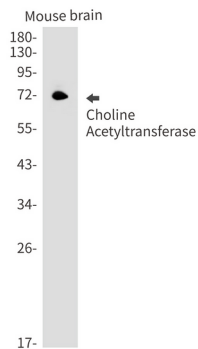
<b>Gene Name</b>	Choline Acetyltransferase
<b>Alternative Names</b>	CHAT; Choline O-acetyltransferase; CHOACTase; ChAT; Choline acetylase
<b>Gene ID</b>	1103.0
<b>SwissProt ID</b>	P28329
<b>Immunogen</b>	A synthetic peptide of human Choline Acetyltransferase

**Background**

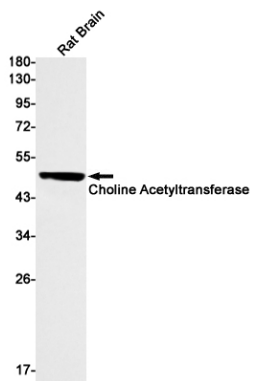
Catalyzes the reversible synthesis of acetylcholine (ACh) from acetyl CoA and choline at cholinergic synapses.

**Research Area**

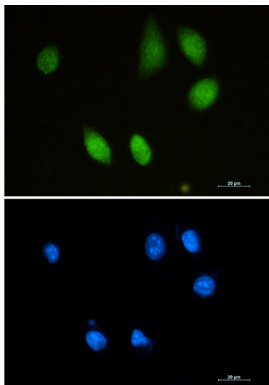
## Image Data



Western blot analysis of Choline Acetyltransferase in mouse brain lysates using Choline Acetyltransferase antibody.



Western blot analysis of Choline Acetyltransferase in rat Brain lysates using Choline Acetyltransferase antibody



Immunocytochemistry analysis of Choline Acetyltransferase (green) in SH-SY5Y using Choline Acetyltransferase antibody, and DAPI (blue).