
Product Name: CENPE Rabbit Monoclonal Antibody**Catalog #: AMRe85428**

For research use only.

Summary

Description	Recombinant rabbit monoclonal antibody
Host	Rabbit
Application	WB
Reactivity	Human
Conjugation	Unconjugated
Modification	Unmodified
Isotype	IgG
Clonality	Monoclonal
Form	Liquid
Concentration	
Storage	Aliquot and store at -20°C (valid for 12 months). Avoid freeze/thaw cycles.
Shipping	Ice bags
Buffer	Purified antibody in TBS with 0.05% sodium azide, 0.05% protective protein and 50% glycerol.
Purification	Affinity Purification

Application

Dilution Ratio	WB 1:500-1:1000
Molecular Weight	Calculated MW: 316 kDa; Observed MW: 316 kDa

Antigen Information

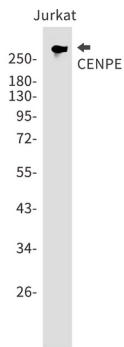
Gene Name	CENPE
Alternative Names	CENP E; Centromere associated protein E; Centromere protein E 312kDa; KIF10; Kinesin family member 10; Kinesin related protein; PPP1R61
Gene ID	1062.0
SwissProt ID	Q02224
Immunogen	A synthetic peptide of human CENPE

Background

CENPE is a 250-300 kDa human centromere-associated kinesin-like motor protein that accumulates in G2 phase.

Research Area

Image Data



Western blot analysis of CENPE in Jurkat lysates using CENPE antibody.