

**Product Name: CECR5 Rabbit Monoclonal Antibody****Catalog #: AMRe85425**

For research use only.

**Summary**

<b>Description</b>	Recombinant rabbit monoclonal antibody
<b>Host</b>	Rabbit
<b>Application</b>	WB,IP
<b>Reactivity</b>	Human
<b>Conjugation</b>	Unconjugated
<b>Modification</b>	Unmodified
<b>Isotype</b>	IgG
<b>Clonality</b>	Monoclonal
<b>Form</b>	Liquid
<b>Concentration</b>	
<b>Storage</b>	Aliquot and store at -20°C (valid for 12 months). Avoid freeze/thaw cycles.
<b>Shipping</b>	Ice bags
<b>Buffer</b>	Purified antibody in TBS with 0.05% sodium azide, 0.05% protective protein and 50% glycerol.
<b>Purification</b>	Affinity Purification

**Application**

<b>Dilution Ratio</b>	WB 1:500-1:1000, IP 1:10-1:20
<b>Molecular Weight</b>	Calculated MW: 46 kDa; Observed MW: 46 kDa

**Antigen Information**

<b>Gene Name</b>	CECR5
<b>Alternative Names</b>	haloacid dehalogenase like hydrolase domain containing 5; CECR5
<b>Gene ID</b>	27440.0
<b>SwissProt ID</b>	Q9BXW7
<b>Immunogen</b>	A synthetic peptide of human CECR5

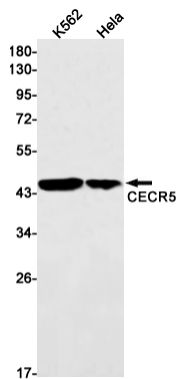
**Background**

MiscellaneousCandidate gene for the Cat Eye Syndrome (CES), a developmental disorder associated with the duplication of a 2 Mb region of 22q11.2. Duplication usually takes in the form of a supernumerary bisatellited isodicentric chromosome, resulting in four copies of the region (represents an inv dup(22)(q11)). CES is characterized clinically by the combination of

coloboma of the iris and anal atresia with fistula, downslanting palpebral fissures, preauricular tags and/or pits, frequent occurrence of heart and renal malformations, and normal or near-normal mental development.

## Research Area

## Image Data



Western blot analysis of CECR5 in K562, HeLa lysates using CECR5 antibody.