

---

**Product Name: CD272 Rabbit Monoclonal Antibody****Catalog #: AMRe85401**

For research use only.

**Summary**

<b>Description</b>	Recombinant rabbit monoclonal antibody
<b>Host</b>	Rabbit
<b>Application</b>	WB,IHC,IP
<b>Reactivity</b>	Human,Mouse
<b>Conjugation</b>	Unconjugated
<b>Modification</b>	Unmodified
<b>Isotype</b>	IgG
<b>Clonality</b>	Monoclonal
<b>Form</b>	Liquid
<b>Concentration</b>	0.62mg/ml. The concentration of this product may be batch-dependent.
<b>Storage</b>	Aliquot and store at -20°C (valid for 12 months). Avoid freeze/thaw cycles.
<b>Shipping</b>	Ice bags
<b>Buffer</b>	Purified antibody in TBS with 0.05% sodium azide,0.05%protective protein and 50% glycerol.
<b>Purification</b>	Affinity Purification

**Application**

<b>Dilution Ratio</b>	WB 1:500-1:1000,IHC 1:50-1:100,IP 1:10-1:20
<b>Molecular Weight</b>	Calculated MW: 34 kDa; Observed MW: 55-80 kDa

**Antigen Information**

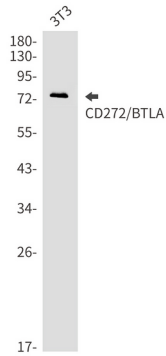
<b>Gene Name</b>	CD272
<b>Alternative Names</b>	A630002H24; B-and T-lymphocyte-associated protein
<b>Gene ID</b>	208154.0
<b>SwissProt ID</b>	Q7TSA3
<b>Immunogen</b>	Recombinant protein of mouse CD272

**Background**

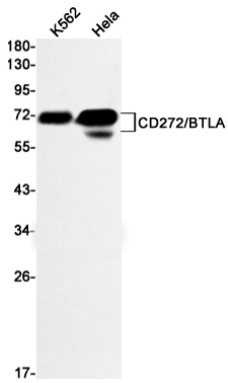
Lymphocyte inhibitory receptor which inhibits lymphocytes during immune response.

**Research Area**

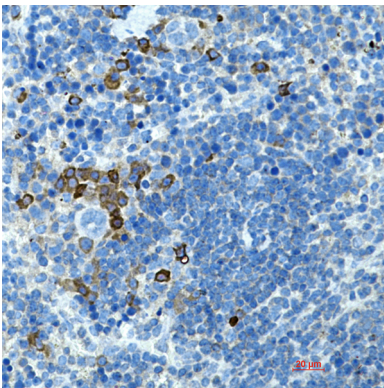
## Image Data



Western blot analysis of CD272/BTLA in 3T3 lysates using CD272/BTLA antibody.



Western blot analysis of CD272/BTLA in K562, HeLa lysates using CD272/BTLA antibody



Immunohistochemistry analysis of paraffin-embedded mouse spleen using CD272 antibody. High-pressure and temperature Sodium Citrate pH 6.0 was used for antigen retrieval.