
Product Name: CD226 Rabbit Monoclonal Antibody**Catalog #: AMRe85398**

For research use only.

Summary

Description	Recombinant rabbit monoclonal antibody
Host	Rabbit
Application	WB
Reactivity	Human
Conjugation	Unconjugated
Modification	Unmodified
Isotype	IgG
Clonality	Monoclonal
Form	Liquid
Concentration	
Storage	Aliquot and store at -20°C (valid for 12 months). Avoid freeze/thaw cycles.
Shipping	Ice bags
Buffer	Purified antibody in TBS with 0.05% sodium azide, 0.05% protective protein and 50% glycerol.
Purification	Affinity Purification

Application

Dilution Ratio	WB 1:500-1:1000
Molecular Weight	Calculated MW: 39 kDa; Observed MW: 60-80 kDa

Antigen Information

Gene Name	CD226
Alternative Names	CD226; DNAM1; CD226 antigen; DNAX accessory molecule 1; DNAM-1; CD antigen CD226
Gene ID	10666.0
SwissProt ID	Q15762
Immunogen	A synthetic peptide of human CD226

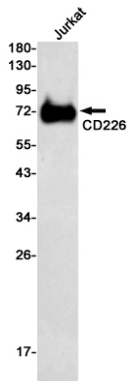
Background

This gene encodes a glycoprotein expressed on the surface of NK cells, platelets, monocytes and a subset of T cells. It is a member of the Ig-superfamily containing 2 Ig-like domains of the V-set. The protein mediates cellular adhesion of platelets and megakaryocytic cells to vascular endothelial cells. The protein also plays a role in megakaryocytic cell maturation. Alternative

splicing results in multiple transcript variants.

Research Area

Image Data



Western blot analysis of CD226 in Jurkat lysates using CD226 antibody.