

Product Name: CD22 Rabbit Monoclonal Antibody**Catalog #: AMRe85397**

For research use only.

Summary

Description	Recombinant rabbit monoclonal antibody
Host	Rabbit
Application	WB,ICC,IP
Reactivity	Human
Conjugation	Unconjugated
Modification	Unmodified
Isotype	IgG
Clonality	Monoclonal
Form	Liquid
Concentration	
Storage	Aliquot and store at -20°C (valid for 12 months). Avoid freeze/thaw cycles.
Shipping	Ice bags
Buffer	Purified antibody in TBS with 0.05% sodium azide,0.05%protective protein and 50% glycerol.
Purification	Affinity Purification

Application

Dilution Ratio	WB 1:500-1:1000,ICC 1:50-1:200,IP 1:10-1:20
Molecular Weight	Calculated MW: 95 kDa; Observed MW: 140 kDa

Antigen Information

Gene Name	CD22
Alternative Names	CD22; SIGLEC2; B-cell receptor CD22; B-lymphocyte cell adhesion molecule; BL-CAM; Sialic acid-binding Ig-like lectin 2; Siglec-2; T-cell surface antigen Leu-14; CD antigen CD22
Gene ID	933.0
SwissProt ID	P20273
Immunogen	Recombinant protein of human CD22

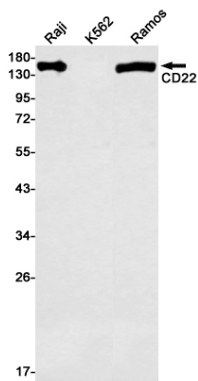
Background

Acts as a regulator of B cell signaling. CD22 is expressed as both a cytoplasmic and membrane protein during discrete stages of B cell lymphocyte differentiation. The cytoplasmic form of CD22, expressed early in B cell development, is a useful marker for

acute lymphocytic leukemia. The membrane form of CD22 is expressed in mature B cells prior to their differentiation into plasma cells. Alternative splicing results in two different isoforms, CD22 α and CD22 β .

Research Area

Image Data



Western blot analysis of CD22 in Raji, K562, Ramos lysates using CD22 antibody.



Immunocytochemistry analysis of CD22 (green) in HL-60 using CD22 antibody, and DAPI(blue).