

---

**Product Name: CD166 Rabbit Monoclonal Antibody****Catalog #: AMRe85395**

For research use only.

**Summary**

<b>Description</b>	Recombinant rabbit monoclonal antibody
<b>Host</b>	Rabbit
<b>Application</b>	WB,IHC,ICC,IP
<b>Reactivity</b>	Human,Mouse,Rat
<b>Conjugation</b>	Unconjugated
<b>Modification</b>	Unmodified
<b>Isotype</b>	IgG
<b>Clonality</b>	Monoclonal
<b>Form</b>	Liquid
<b>Concentration</b>	0.53mg/ml. The concentration of this product may be batch-dependent.
<b>Storage</b>	Aliquot and store at -20°C (valid for 12 months). Avoid freeze/thaw cycles.
<b>Shipping</b>	Ice bags
<b>Buffer</b>	Purified antibody in TBS with 0.05% sodium azide,0.05%protective protein and 50% glycerol.
<b>Purification</b>	Affinity Purification

**Application**

<b>Dilution Ratio</b>	WB 1:500-1:1000,IHC 1:50-1:100,ICC 1:50-1:200,IP 1:10-1:20
<b>Molecular Weight</b>	Calculated MW: 65 kDa; Observed MW: 105 kDa

**Antigen Information**

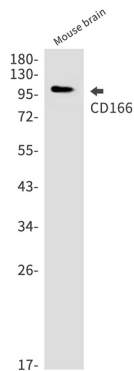
<b>Gene Name</b>	CD166
<b>Alternative Names</b>	ALCAM; MEMD; CD166 antigen; Activated leukocyte cell adhesion molecule; CD166
<b>Gene ID</b>	214.0
<b>SwissProt ID</b>	Q13740
<b>Immunogen</b>	A synthetic peptide of human CD166

**Background**

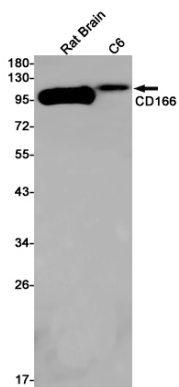
Cell adhesion molecule that binds to CD6. Involved in neurite extension by neurons via heterophilic and homophilic interactions. May play a role in the binding of T- and B-cells to activated leukocytes, as well as in interactions between cells of the nervous system.

## Research Area

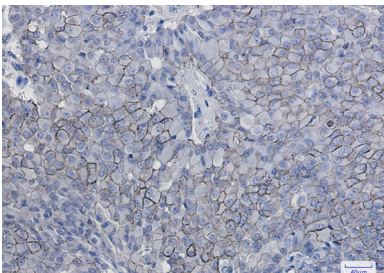
## Image Data



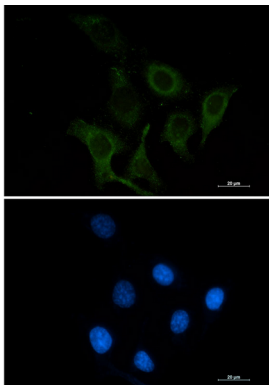
Western blot analysis of CD166 in mouse brain lysates using CD166 antibody.



Western blot analysis of CD166 in rat Brain, C6 lysates using CD166 antibody



Immunohistochemistry analysis of paraffin-embedded Human breast cancer using CD166 antibody. High-pressure and temperature Sodium Citrate pH 6.0 was used for antigen retrieval.



Immunocytochemistry analysis of CD166 (green) in SKOV-3 using CD166 antibody and DAPI (blue).

