
Product Name: Catalase Rabbit Monoclonal Antibody**Catalog #: AMRe85385**

For research use only.

Summary

Description	Recombinant rabbit monoclonal antibody
Host	Rabbit
Application	WB,IHC,ICC
Reactivity	Human
Conjugation	Unconjugated
Modification	Unmodified
Isotype	IgG
Clonality	Monoclonal
Form	Liquid
Concentration	0.62mg/ml. The concentration of this product may be batch-dependent.
Storage	Aliquot and store at -20°C (valid for 12 months). Avoid freeze/thaw cycles.
Shipping	Ice bags
Buffer	Purified antibody in TBS with 0.05% sodium azide,0.05%protective protein and 50% glycerol.
Purification	Affinity Purification

Application

Dilution Ratio	WB 1:500-1:1000,IHC 1:50-1:100,ICC 1:50-1:200
Molecular Weight	Calculated MW: 60 kDa; Observed MW: 60 kDa

Antigen Information

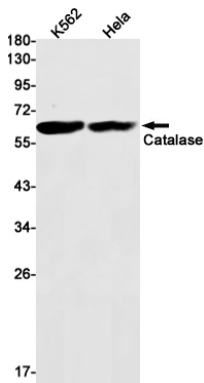
Gene Name	Catalase
Alternative Names	Cas1; CAT; Catalase; Cs1
Gene ID	847.0
SwissProt ID	P04040
Immunogen	A synthetic peptide of human Catalase

Background

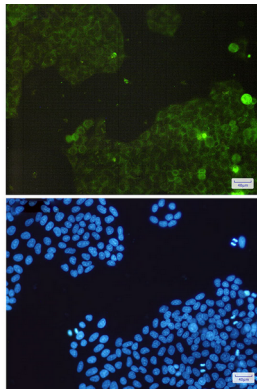
Catalase catalyzes the conversion of hydrogen peroxide to water and oxygen. Research studies show that overexpression of this antioxidant enzyme increases the ability of pancreatic β -cells to scavenge reactive oxygen species (ROS), thereby protecting pancreatic β -cells from oxidative stress.

Research Area

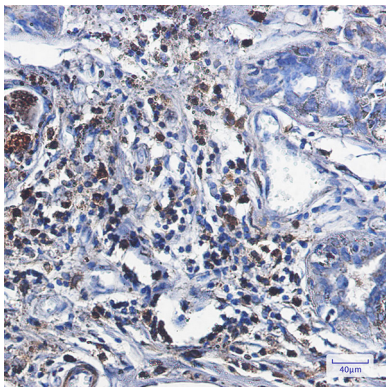
Image Data



Western blot analysis of Catalase in K562, HeLa lysates using Catalase antibody.



Immunocytochemistry analysis of Catalase(green) in HeLa using Catalase antibody, and DAPI(blue)



Immunohistochemistry analysis of paraffin-embedded Human breast cancer using Catalase antibody. High-pressure and temperature Sodium Citrate pH 6.0 was used for antigen retrieval.