

**Product Name: Caspase 10 Rabbit Monoclonal Antibody****Catalog #: AMRe85380**

For research use only.

**Summary**

<b>Description</b>	Recombinant rabbit monoclonal antibody
<b>Host</b>	Rabbit
<b>Application</b>	WB,IHC,IP
<b>Reactivity</b>	Human
<b>Conjugation</b>	Unconjugated
<b>Modification</b>	Unmodified
<b>Isotype</b>	IgG
<b>Clonality</b>	Monoclonal
<b>Form</b>	Liquid
<b>Concentration</b>	
<b>Storage</b>	Aliquot and store at -20°C (valid for 12 months). Avoid freeze/thaw cycles.
<b>Shipping</b>	Ice bags
<b>Buffer</b>	Purified antibody in TBS with 0.05% sodium azide,0.05%protective protein and 50% glycerol.
<b>Purification</b>	Affinity Purification

**Application**

<b>Dilution Ratio</b>	WB 1:500-1:1000,IHC 1:50-1:100,IP 1:10-1:20
<b>Molecular Weight</b>	Calculated MW: 59 kDa; Observed MW: 59 kDa

**Antigen Information**

<b>Gene Name</b>	Caspase 10
<b>Alternative Names</b>	CASP10; MCH4; Caspase-10; CASP-10; Apoptotic protease Mch-4; FAS-associated death domain protein interleukin-1B-converting enzyme 2; FLICE2; ICE-like apoptotic protease 4
<b>Gene ID</b>	843.0
<b>SwissProt ID</b>	Q92851
<b>Immunogen</b>	Recombinant protein of human Caspase-10

**Background**

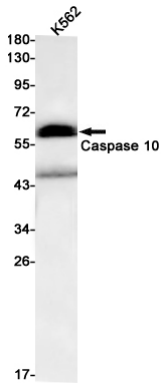
Caspases are a family of cytosolic aspartate specific cysteine proteases. Involved in the activation cascade of caspases responsible for apoptosis execution. Cleaved Caspase 10 leads to the processing of Caspase 3 and Caspase 7, initiating a

caspase cascade and subsequent apoptosis.

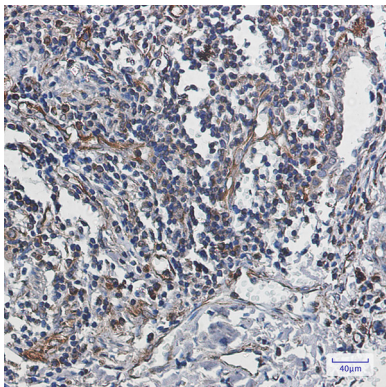
## Research Area

Apoptosis

## Image Data



Western blot analysis of Caspase 10 in K562 lysates using Caspase 10 antibody.



Immunohistochemistry analysis of paraffin-embedded Human lung cancer using Caspase 10 antibody. High-pressure and temperature Sodium Citrate pH 6.0 was used for antigen retrieval.