

Product Name: Casein Kinase 1 alpha Rabbit Monoclonal Antibody
Catalog #: AMRe85378

Summary

Production Name	Casein Kinase 1 alpha Rabbit Monoclonal Antibody
Description	Rabbit Monoclonal antibody
Host	Rabbit
Application	WB,IP
Reactivity	Human,Rat

Performance

Conjugation	Unconjugated
Modification	Unmodified
Isotype	IgG
Clonality	Monoclonal
Form	Liquid
Storage	Store at 4°C short term. Aliquot and store at -20°C long term. Avoid freeze/thaw cycles.
Buffer	Purified antibody in TBS with 0.05% sodium azide,0.05%protective protein and 50% glycerol.
Purification	Affinity Purification

Immunogen

Gene Name	Casein Kinase 1 alpha
Alternative Names	CSNK1A1; Casein kinase I isoform alpha; CKI-alpha; CK1
Gene ID	1452.0
SwissProt ID	P48729. A synthetic peptide of human Casein Kinase 1 alpha

Application

Dilution Ratio	WB:1:500-1:1000,IP:1:10-1:20
Molecular Weight	Calculated MW: 39 kDa; Observed MW: 34 kDa

Background

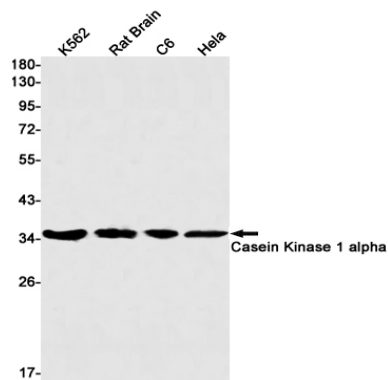
Product Name: Casein Kinase 1 alpha Rabbit Monoclonal Antibody
Catalog #: AMRe85378

Casein kinases are operationally defined by their preferential utilization of acidic proteins such as caseins as substrates. It can phosphorylate a large number of proteins. Participates in Wnt signaling. Phosphorylates CTNNB1 at 'Ser-45'. May play a role in segregating chromosomes during mitosis.

Research Area

Wnt signaling pathway

Image Data



Western blot analysis of Casein Kinase 1 alpha in K562, rat Brain, C6, HeLa lysates using Casein Kinase 1 alpha antibody.

Note

For research use only.