
Product Name: CaMKII alpha Rabbit Monoclonal Antibody**Catalog #: AMRe85374**

For research use only.

Summary

Description	Recombinant rabbit monoclonal antibody
Host	Rabbit
Application	WB
Reactivity	Human,Mouse,Rat
Conjugation	Unconjugated
Modification	Unmodified
Isotype	IgG
Clonality	Monoclonal
Form	Liquid
Concentration	
Storage	Aliquot and store at -20°C (valid for 12 months). Avoid freeze/thaw cycles.
Shipping	Ice bags
Buffer	Purified antibody in TBS with 0.05% sodium azide,0.05%protective protein and 50% glycerol.
Purification	Affinity Purification

Application

Dilution Ratio	WB 1:500-1:1000
Molecular Weight	Calculated MW: 54 kDa; Observed MW: 54 kDa

Antigen Information

Gene Name	CaMKII alpha CAMK2A; CAMKA; KIAA0968; Calcium/calmodulin-dependent protein kinase type II subunit
Alternative Names	alpha; CaM kinase II subunit alpha; CaMK-II subunit alpha; CAMK2B; CAM2; CAMK2; CAMKB; Calcium/calmodulin-dependent protein kinase type II subunit beta; Ca
Gene ID	815.0
SwissProt ID	Q9UQM7
Immunogen	A synthetic peptide of human CaMKII

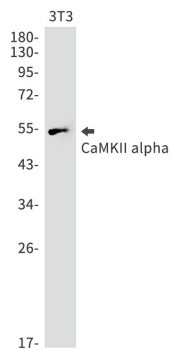
Background

CaM-kinase II (CAMK2) is a prominent kinase in the central nervous system that may function in long-term potentiation and

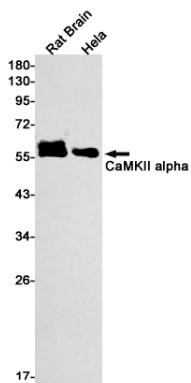
neurotransmitter release. Member of the NMDAR signaling complex in excitatory synapses it may regulate NMDAR-dependent potentiation of the AMPAR and synaptic plasticity.

Research Area

Image Data



Western blot analysis of CaMKII alpha in 3T3 lysates using CaMKII alpha antibody.



Western blot analysis of CaMKII alpha in rat Brain, HeLa lysates using CaMKII alpha antibody.